

Issue 2017

Supplemental range to the main G15 catalogue

# We take mobility a step further.



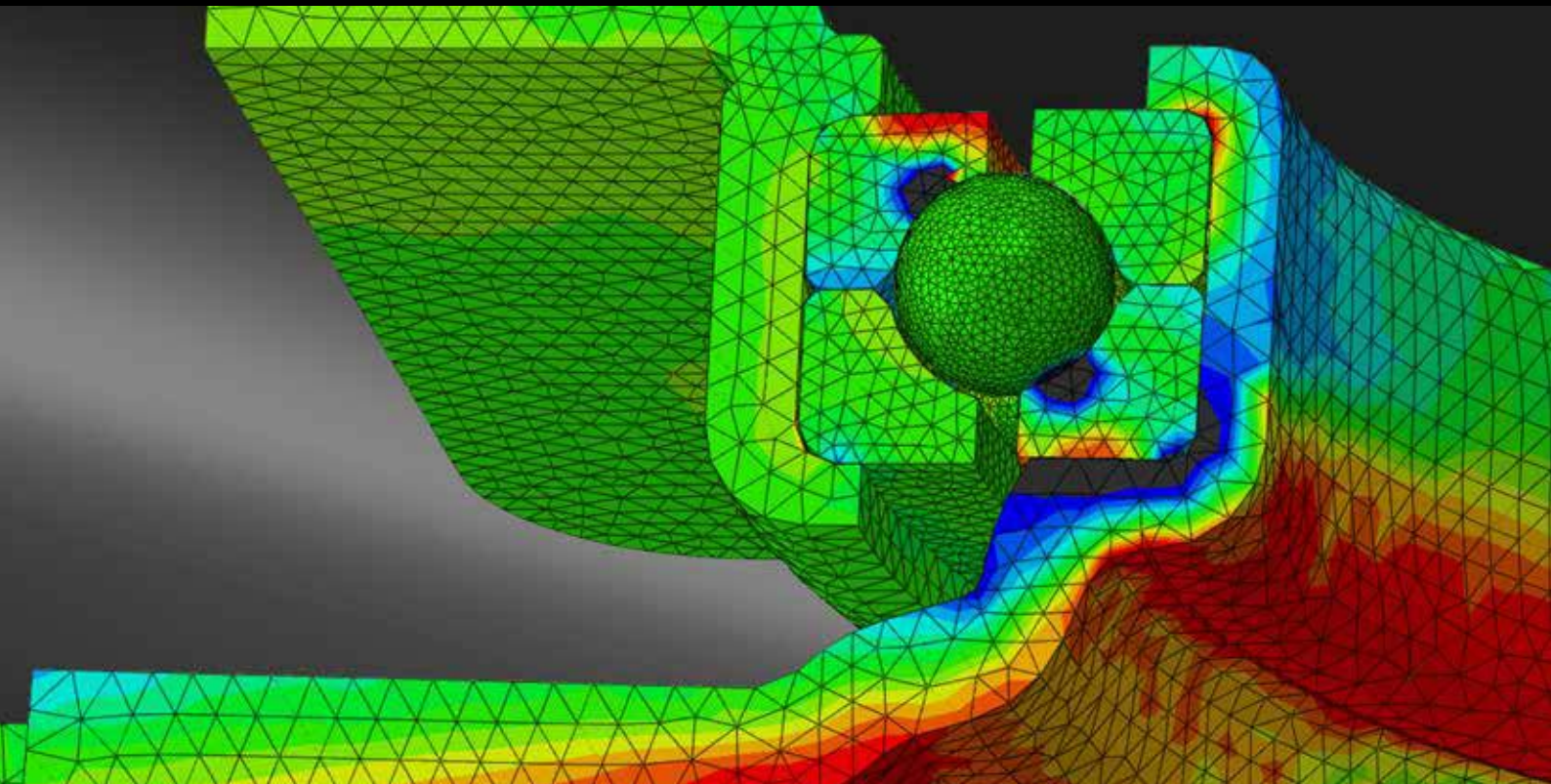
Innovations.

Optimisations.

New features.

WELCOME TO THE FUTURE.

# Innovation moves the world. Blickle innovations 2017.



**The best wheel, the best castor for every application – our Research and Development department works constantly to meet this requirement. These New Products brochures will keep you up-to-date about the new Blickle products, materials and development**

You know us as an innovative company with a range of more than 30,000 products. For us, constant optimization and new development are the key goals in our company strategy.

No matter whether this is an innovative technology for levelling castors or new elastic solid-rubber composites – we will keep you informed about our company's latest innovations. The **Blickle New Products brochure** is a supplement to the current catalogue, which is available to you in the usual way. It goes without saying that all new products are also available to view through our website and via our product finder there.

We hope you find these new products interesting, they are designed to offer new possibilities in areas where existing products don't quite meet your requirements.

# Content



**Blickle – we innovate mobility**

4 – 9

Basics and explanation of terms / legend

10

**i**

**HR Series...**

**Blickle levelling castors** with integrated truck lock

11 – 25

**1**

**...-TB/...-TM Series**

Swivelling and fixed castors with **drum and dead man brakes**

27 – 30

**2**

**ALEV...-SG-AS Series**

**Antistatic** wheels and castors

31 – 35

**3**

**ALB Series**

Wheels and castors with **reduced rolling and swivel resistance**

37 – 42

**4**

**POES/ALES Series**

**Blickle SoftMotion:** Wheels and castors made of soft rubber

43 – 47

**5**

**POEV Series**

**All-round series** with elastic solid-rubber tyres

49 – 53

**6**

**POBS Series**

The Blickle series for **food production and hygiene applications**

55 – 59

**7**

**Blickle MOVE**

**Synthetic twin castors** from Blickle

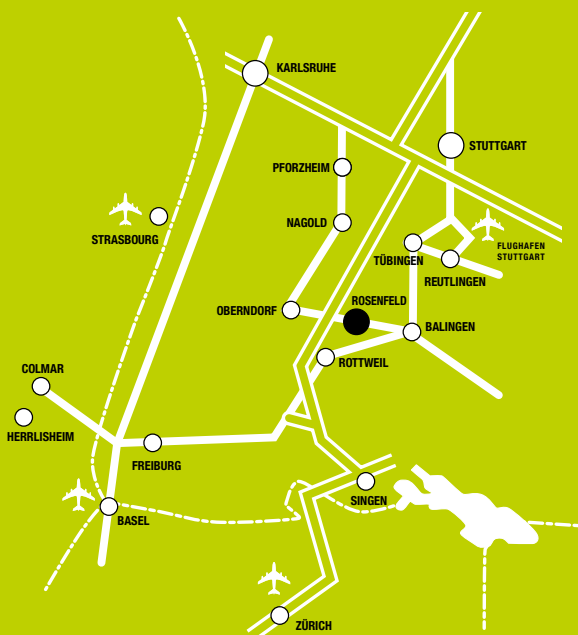
61 – 71

**8**



BLICKLE. A COMPANY ON THE MOVE.

Blickle. Your partner in motion.  
Think mobility.



In order to be and stay one of the leading manufacturers of castors and wheels over decades you have to have both traditional reliability and modern innovation. Blickle has been manufacturing high-quality castors and wheels since 1953 and is one of the biggest companies worldwide in this field in terms of volumes, range and quality.

Our demands are very simple: To develop the best castor or wheel for every application. We reinvent the wheel every day – with excellent ideas, innovative concepts, material and production technology, lateral thinking, years of experience, as well as motivated and committed employees.

By keeping our headquarters in Rosenfeld, we are committed to our base in Germany and, as a result, to excellent quality: All based on the latest production technology with a high degree of automation. Blickle is known worldwide for high-quality, long-lasting and maintenance-free castors and wheels that are 'Made in Germany'.





Company headquarters in Rosenfeld

Today the Blicke Group internationally employs more than 850 staff, more than 600 of which are located at the headquarters in Rosenfeld. Blicke presently maintains 16 sales subsidiaries across Europe, North America and Asia, as well as numerous exclusive agencies with well stocked warehouses in over 120 countries around the globe.

We confirmed our commitment to the protection of the environment by receiving ISO 14001 certification in 2012. By complying to this standard the position of Blicke as a forward-thinking and environmentally conscious company was once again confirmed.



Your needs are our challenge.  
We innovate mobility.

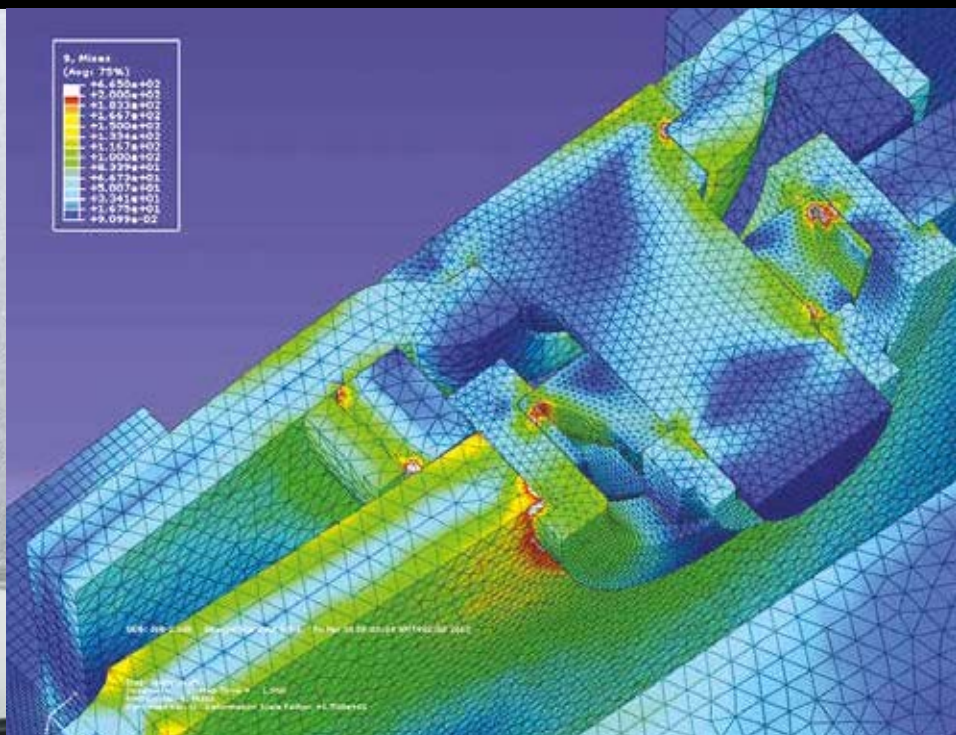
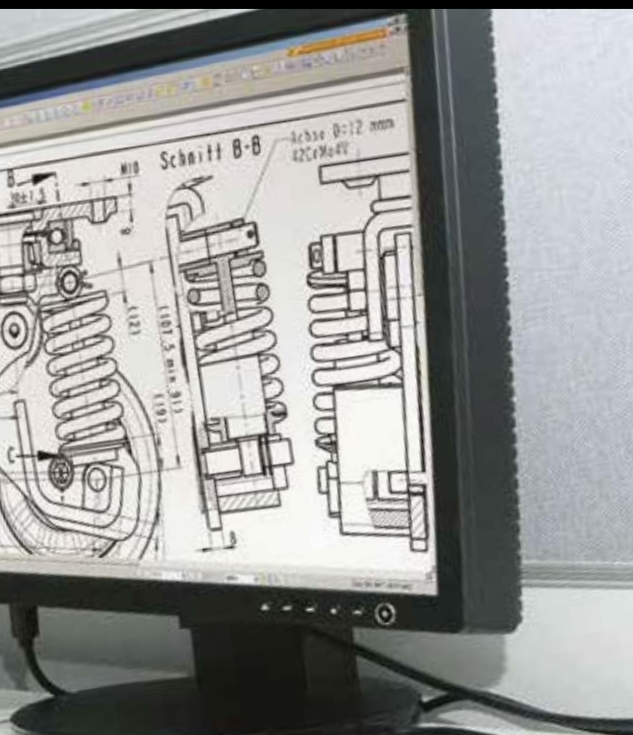


**Only those committed to perfection will stay ahead. At Blickle, we strongly believe in innovation, but still keep an eye on what we already do best. By focusing on innovative research and development, our engineers constantly strive to develop the best possible wheel & castor solution for each and every application our customers may have in mind.**

**Our goal:  
To produce the best wheel or best castor for every possible application.**







Initial sample testing for product release

To reinvent the wheel every day: Our team of dedicated engineers are committed to this philosophy and work hard to enhance, diversify and optimise our product range. We utilise the latest technology including linear and non-linear FEA and work closely with established institutes to keep our engineers' innovative ideas rolling. Our intelligent and efficient approach is achieved by combining engineering services with on-site tool making facilities and direct CAD data transfer to develop innovations in real time. We are also dedicated to conducting elementary research besides focusing on developing specific, customer-oriented technical solutions. The best example of our commitment to research is Bestthane®, the innovative polyurethane tread, which has been especially developed in our in-house laboratory to handle the most arduous conditions, heaviest loads and high speeds.

QUALITY. HOW WE MAKE SURE WE STAY AHEAD.

## The basis of our success: Quality.

**The confidence of our customers is of paramount importance to us: This confidence is earned through hard work as well as through quality and reliability. With our own production facilities based in Germany and our continuing commitment to local manufacturing, we have full control over quality and delivery from the very beginning. The state-of-the-art production facilities guarantee higher processing accuracy and reliability, which we aim to improve every day. This is why we were the first wheel and castor manufacturer to be certified with ISO 9001 in 1994. In 2012, the areas of environment and security (ISO 14001) were added to quality management, followed by energy management (ISO 50001) in 2014.**

A multitude of testing devices are available for our engineers in our test laboratories, including various rotary test benches for loads of up to 5.5 t, material test equipment, as well as climatic exposure test cabinets. With our state-of-the-art measuring equipment we carry out wheel and castor tests in accordance to DIN EN 12527-12533 and also destructive tests. The first and last parts of every production lot are always approved by a worker. The many testing and control stations in our fully automatic production lines guarantee the high level of quality expected from Blickle. In addition, every product is checked again prior to despatch. Just to make sure.

3-D digitalisation  
with a high-tech camera



Intensive testing guarantees the high level of quality expected from Blickle.







Certificate  
awarded to



Blickle Räder+Rollen GmbH u. Co. KG  
Heinrich-Blickle-Str. 1  
D-72348 Rosenfeld, Germany

Bureau Veritas Certification certifies that the Management System of the above  
organisation has been assessed and found to be in accordance  
with the requirements of the standards detailed below.

Standard

**DIN EN ISO 9001:2008**  
Scope of supply

Development, production and international sales of wheels and castors

Original approval date: 21.06.1994

Subject to the continued satisfactory operation of the organisation's Management System, this certificate is valid from

Date of certification: 20.03.2016 Valid until: 14.09.2018

To check the certificate validity you may contact Bureau Veritas Certification. Further clarifications regarding the scope of this  
certificate and the applicability of the Management System requirements may be obtained by consulting the organisation.

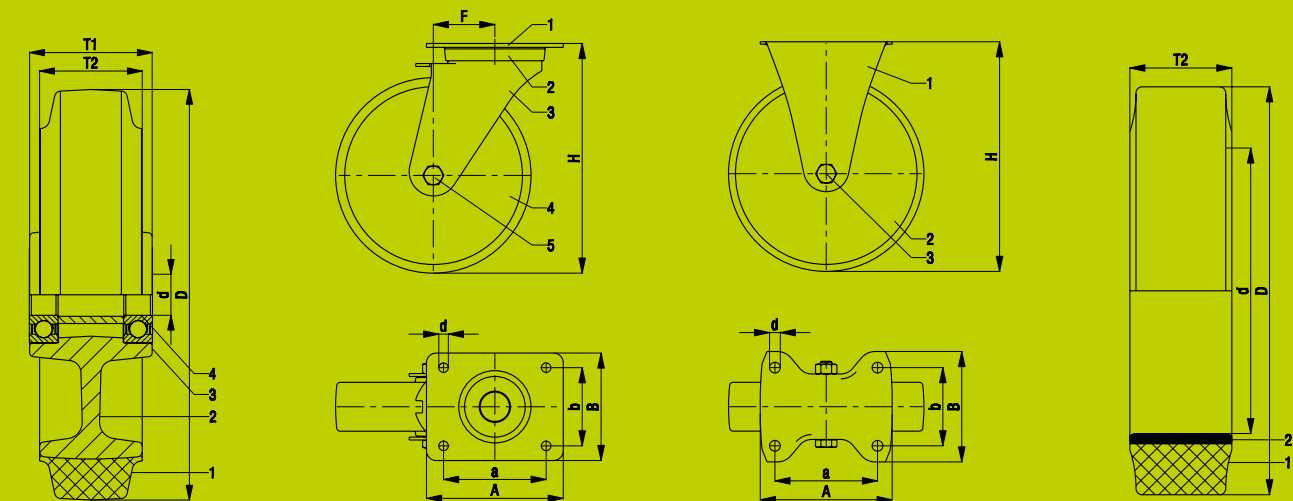
*Andreas Loh*  
Lead Technical Manager

Date: 14.03.2018  
Certificate number: DE00345-1

Bureau Veritas Certification Germany GmbH  
Verlaskal 1 · D-21079 Hamburg



# Basics / Terminology



## Wheel

### Designations:

- 1 = Tread/tyre
- 2 = Wheel centre/rim
- 3 = Hub
- 4 = Wheel bearing

### Dimensions:

- D = Wheel diameter
- d = Axle bore diameter
- T1 = Hub length
- T2 = Wheel width

Wheels consist of tread/tyre, wheel centre/rim and a wheel bearing.

Depending on their nature, the wheels have different load capacities, rolling resistances and rolling qualities.

The sectional drawings of the wheels included on the product pages show only examples of each series, and may differ, depending on the product range.

## Swivel castor

### Designations:

- 1-3 = Swivel bracket
  - 1 = Top plate fitting
  - 2 = Swivel head (swivel bearing)
  - 3 = Swivel fork
- 4 = Wheel
- 5 = Wheel axle

### Dimensions:

- H = Total height/mounting height
- F = Offset
- A,B = Plate dimensions
- a,b = Bolt hole spacing
- d = Bolt hole diameter

Swivel castors are vertically rotatable and make appliances, etc. manoeuvrable. A fork (swivel fork) is fitted to the fitting element by a swivel head (swivel bearing). To enable a smooth swivel motion of the fork, the wheel is generally fitted with a horizontal distance between the axis of the swivel bearing and the wheel (offset). If correctly dimensioned, the offset allows a smooth swivelling of the castor without additional tools as well as directional stability. Swivel castors can be equipped with brake systems to lock:

- the rotary motion of the wheel (wheel brake)
- the rotary motion of the wheel and the swivel motion of the fork (wheel and swivel head brake)
- the swivel motion of the fork (directional lock).

## Fixed castor

### Designations:

- 1 = Fixed bracket
- 2 = Wheel
- 3 = Wheel axle

### Dimensions:

- H = Total height/mounting height
- A,B = Plate dimensions
- a,b = Bolt hole spacing
- d = Bolt hole diameter

Fixed castors provide directional stability for appliances, etc. and cannot be swivelled.

## Press-on band/tyre

### Designations:

- 1 = Tread/tyre
- 2 = Steel-band

### Dimensions:

- D = Outer diameter
- d = Inner diameter
- T2 = Width

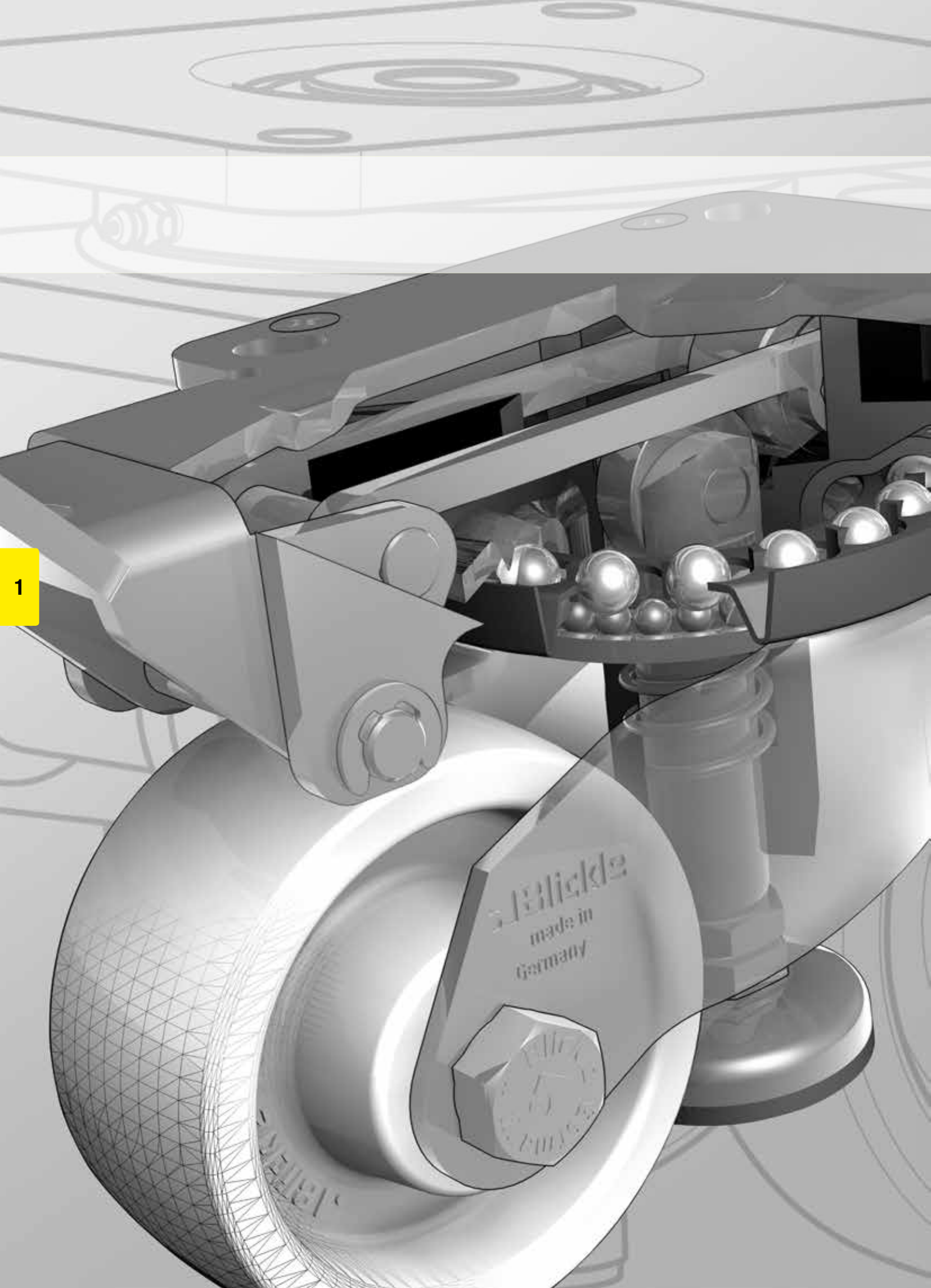
Press-on bands/tyres consist of different elastomers and are equipped with a steel ring or a steel insert. Depending on their nature, press-on bands/tyres have different load capacities, rolling resistances and rolling qualities.



Secure footing. Easy levelling.

# Blickle levelling castors with integrated truck lock





1



Blickle levelling castors.

**Sturdy in use.  
Easy to use.**



1

## **From mobile to stable – The right solution for every need**

**Blickle's levelling castors set benchmarks when it comes to transforming mobile work equipment and transport units into stable worktops.**

The new range of levelling castors from Blickle combines the successful and proven Blickle levelling castor concept with a large variety of new and innovative levelling castor solutions. Lifting and setting down transport trolleys and transport units is becoming increasingly important, especially with regard to the growing importance of mobility. From simple lifting of small transport units up to the movement, positioning and levelling of heavy machinery, Blickle is an experienced partner and problem solver.

The wide variety of operating concepts for Blickle levelling castors also sets sustainable standards. From ergonomically designed operating levers, which either swivel with the castor or are permanently positioned, up to the simultaneous operation of several levelling castors with a hydraulic pump. Blickle levelling castors have the right operating concept for every situation. With regard to the equalisation of the different mounting heights of individual castors, the Blickle range of levelling castors also offers optimum solutions.

Maximum operating comfort – secure footing.

# Blickle levelling castors at a glance



Series	HRLK Levelling castors with fixed location operating lever	HRLK...-HN Levelling castors with following swivelling operating and release levers	HRLK...-F Levelling castors with fixed foot and height-adjustable wheels	HRLK...-VS Height adjustment castors with leading adjustment screw
<b>Special features</b>	<ul style="list-style-type: none"> <li>■ Ergonomically designed operating lever</li> <li>■ Simple operation through fixed operation lever position</li> <li>■ High floor clearance in the travel position</li> </ul>	<ul style="list-style-type: none"> <li>■ Swivelling operating and release lever</li> <li>■ Relatively low operating and release forces for the truck lock</li> <li>■ Operating and release lever can be swivelled under the edge of the trolley</li> <li>■ High floor clearance in the travel position</li> </ul>	<ul style="list-style-type: none"> <li>■ Operating lever swivels with the castor</li> <li>■ Good stability due to fixed foot</li> <li>■ Relatively low operating and release forces for the height adjustment of the wheel</li> <li>■ Operating lever can be swivelled under the edge of the trolley</li> </ul>	<ul style="list-style-type: none"> <li>■ Height adjustment in stationary operation</li> <li>■ Wheel locking when height adjustment is active</li> <li>■ Easy accessibility of the adjustment screw</li> <li>■ Rapid operation of the adjustment screw with battery-powered screwdriver</li> </ul>
<b>Operating the lifting function</b>	Operating lever for simple actuation of the foot	Operating and release lever for simple foot operation	Operating lever for simple actuation of the foot	No wheel levelling function
<b>Adjustment of mounting height in stationary operation</b>	0 Possible	0 Possible	0 Possible	✓ Yes
<b>Height adjustment for dynamic operation</b>	— No	— No	— No	— No
<b>Performing a change of location</b>	■ ■ ■ ■ ■ Frequent	■ ■ ■ ■ ■ Occasional	■ ■ ■ ■ ■ Occasional	■ ■ ■ ■ ■ Rarely
<b>Stability</b>	■ ■ ■ ■ ■ Good	■ ■ ■ ■ ■ Good	■ ■ ■ ■ ■ Excellent	■ ■ ■ ■ ■ Very good
<b>Wheel Ø</b>	75 - 100 mm	80 mm	80 mm	80 - 100 mm
<b>Load capacity</b>	up to 300 kg	up to 250 kg	up to 150 kg	up to 280 kg
<b>Bracket surface</b>	Zinc-plated, blue-passivated, Cr6-free	Zinc-plated, blue-passivated, Cr6-free	Zinc-plated, blue-passivated, Cr6-free	Zinc-plated, blue-passivated, Cr6-free
<b>Plate size</b>	<ul style="list-style-type: none"> <li>■ 100 x 85 mm</li> </ul>	<ul style="list-style-type: none"> <li>■ 100 x 85 mm</li> <li>■ 140 x 110 mm (on request)</li> <li>■ 4" x 4 1/2" (on request)</li> </ul>	<ul style="list-style-type: none"> <li>■ 100 x 85 mm</li> <li>■ 140 x 110 mm (on request)</li> <li>■ 4" x 4 1/2" (on request)</li> </ul>	<ul style="list-style-type: none"> <li>■ 100 x 85 mm</li> <li>■ 4" x 4 1/2" (on request)</li> </ul>
<b>Bearing types</b>	<ul style="list-style-type: none"> <li>■ Plain bore</li> <li>■ Central ball bearing (C)</li> <li>■ Ball bearing</li> </ul>	<ul style="list-style-type: none"> <li>■ Plain bore</li> <li>■ Ball bearing</li> </ul>	<ul style="list-style-type: none"> <li>■ Plain bore</li> </ul>	<ul style="list-style-type: none"> <li>■ Plain bore</li> </ul>
<b>Stainless steel version (on request)</b>	✓			
<b>Electrically conductive version (on request)</b>	✓	✓	✓	
<b>Page</b>	16	17	18	19





### HRIG

Levelling castors with adjustment wheel (female thread)



### HRP/HRSP

Levelling castors with adjustment wheel (top plate fitting)



### HRLH/HRLHD

Levelling castors with manual truck lock



### HRLSD

Heavy duty levelling castors with adjustable mounting height



### HRLK...-HYD

Levelling castors with hydraulic pump

<ul style="list-style-type: none"> <li>■ Height adjustment with open-ended spanner or integrated adjustment wheel</li> <li>■ Compact mounting height, high load capacities</li> </ul>	<ul style="list-style-type: none"> <li>■ Height adjustment with open-ended spanner or integrated adjustment wheel</li> <li>■ Compact mounting height, high load capacities</li> </ul>	<ul style="list-style-type: none"> <li>■ Height adjustment with open-ended spanner</li> <li>■ High load capacity</li> <li>■ Also as double swivel castor</li> <li>■ High floor clearance in the travel position</li> <li>■ Excellent footing</li> </ul>	<ul style="list-style-type: none"> <li>■ High load capacity</li> <li>■ Excellent footing, even in applications which cause vibration</li> <li>■ Height adjustable wheel and foot</li> <li>■ Large adjustment range</li> </ul>	<ul style="list-style-type: none"> <li>■ Central, simultaneous and ergonomic lifting of four levelling castors with hydraulic pump</li> <li>■ Silent operation</li> <li>■ Synchronous lifting</li> <li>■ Very little force required</li> <li>■ High floor clearance in the travel position</li> </ul>
Adjustment wheel or open-ended spanner	Adjustment wheel (HRP series) or open-ended spanner (HRP/HRSP series)	Open-ended spanner	Open-ended spanner	Hydraulic pump with folding hand crank
✓ Yes	✓ Yes	✓ Yes	✓ Yes	✓ Yes
— No	— No	— No	✓ Yes	— No
<div> <div></div> <div></div> <div></div> <div></div> <div></div> </div> Rarely	<div> <div></div> <div></div> <div></div> <div></div> <div></div> </div> Rarely	<div> <div></div> <div></div> <div></div> <div></div> <div></div> </div> Rarely	<div> <div></div> <div></div> <div></div> <div></div> <div></div> </div> Rarely	<div> <div></div> <div></div> <div></div> <div></div> <div></div> </div> Frequent
<div> <div></div> <div></div> <div></div> <div></div> <div></div> </div> Good	<div> <div></div> <div></div> <div></div> <div></div> <div></div> </div> Good	<div> <div></div> <div></div> <div></div> <div></div> <div></div> </div> Excellent	<div> <div></div> <div></div> <div></div> <div></div> <div></div> </div> Excellent	<div> <div></div> <div></div> <div></div> <div></div> <div></div> </div> Very good
45 - 72 mm	45 - 90 mm	75 mm	125 mm	100 mm
up to 750 kg	up to 2,000 kg	up to 600 kg	up to 1,300 kg	up to 750 kg (set)
Powder-coated, ivory colour. Steel parts are zinc-plated, blue-passivated, Cr6-free	Powder-coated, ivory colour. Steel parts are zinc-plated, blue-passivated, Cr6-free	Zinc-plated, blue-passivated, Cr6-free	Zinc-plated, yellow-passivated, Cr6-free	Zinc-plated, blue-passivated, Cr6-free
	<ul style="list-style-type: none"> <li>■ 55 x 55 mm</li> <li>■ 73 x 73 mm</li> <li>■ 90 x 90 mm</li> <li>■ 95 x 95 mm</li> <li>■ 100 x 100 mm</li> </ul>	<ul style="list-style-type: none"> <li>■ 100 x 85 mm</li> <li>■ 4" x 4 1/2" (on request)</li> </ul>	<ul style="list-style-type: none"> <li>■ 175 x 140 mm</li> </ul>	<ul style="list-style-type: none"> <li>■ 100 x 85 mm</li> </ul>
<ul style="list-style-type: none"> <li>■ Plain bore</li> </ul>	<ul style="list-style-type: none"> <li>■ Plain bore</li> </ul>	<ul style="list-style-type: none"> <li>■ Ball bearing</li> </ul>	<ul style="list-style-type: none"> <li>■ Ball bearing</li> </ul>	<ul style="list-style-type: none"> <li>■ Central ball bearing (C)</li> </ul>
✓	✓			✓
		✓	✓	✓
20	20	21	22	24-25

Series: HRLK-PO, HRLK-SPO, HRLK-POEV,  
HRLK-ALST, HRLK-ALTH

## Levelling castors with fixed position operating lever and integrated truck brake, with top plate fitting

170 - 300 kg

✓RoHS



**Brackets:** HRLK series - Made of heavy pressed steel, with double ball bearing in the swivel head, swivel head seals. The special Blickle dynamic riveting process of the swivel head results in minimal swivel head play and smooth rolling characteristics with an increased service life achieved by the work hardening of the ball race grooves. Steel truck lock. Height adjustment with actuation lever Bolted wheel axle. Zinc-plated, blue-passivated, Cr6-free.

**Wheels: PO series** - Made of high-quality, impact-resistant polyamide 6, 70° Shore D, natural white.

**SPO series** - Made of high-quality, impact-resistant polyamide 6, robust, heavy duty design, 70° Shore D, natural white.

**POEV series** - Tyres: Made of high-quality elastic solid rubber in smooth rolling quality 'Blickle EasyRoll', 65° Shore A, black.

Wheel centre: Made of high-quality, impact-resistant polyamide 6, black.

**ALST series** - Tread: Made of high-quality polyurethane-elastomer Blickle Softhane®, 75° Shore A, green, non-marking, non-staining. Wheel centre: Made of die-cast aluminium.

**ALTH series** - Tread: Made of high-quality polyurethane-elastomer Blickle Extrathane®, 92° Shore A, light brown, non-marking, non-staining. Wheel centre: Made of die-cast aluminium.

**Bearing types:** Plain bore, two pressed-in ball bearings or a centrally encapsulated ball bearing (C).



Swivel castors	Wheel Ø (D) [mm]	Wheel width [mm]	Load capacity [kg]	Bearing type	Total height (H) [mm]	Max. total height (h) [mm]	Lifting distance (T4) [mm]	Max foot floor clearance (T3) [mm]	Plate size [mm]	Bolt hole spacing [mm]	Bolt hole Ø [mm]	Offset [mm]
<b>PO series</b>												
HRLK-PO 75G	75	32	200	Plain bore	118	120	2	13	100 x 85	80 x 60	9	56
HRLK-PO 82G	80	37	230	Plain bore	120	122	2	13	100 x 85	80 x 60	9	56
HRLK-PO 100G	100	37	230	Plain bore	140	142	2	13	100 x 85	80 x 60	9	65
HRLK-PO 100K	100	37	230	Ball bearing (C)	140	142	2	13	100 x 85	80 x 60	9	65
<b>SPO series</b>												
HRLK-SPO 75G	75	32	300	Plain bore	118	120	2	13	100 x 85	80 x 60	9	56
HRLK-SPO 75K	75	32	300	Ball bearing	118	120	2	13	100 x 85	80 x 60	9	56
HRLK-SPO 80K	80	37	300	Ball bearing	120	122	2	13	100 x 85	80 x 60	9	56
<b>POEV series</b>												
HRLK-POEV 82K	80	40	170	Ball bearing (C)	120	122	2	13	100 x 85	80 x 60	9	56
HRLK-POEV 100K	100	38	200	Ball bearing (C)	140	142	2	13	100 x 85	80 x 60	9	65
<b>ALST series</b>												
HRLK-ALST 82K	80	40	230	Ball bearing	120	122	2	13	100 x 85	80 x 60	9	56
HRLK-ALST 100K	100	40	230	Ball bearing	140	142	2	13	100 x 85	80 x 60	9	65
<b>ALTH series</b>												
HRLK-ALTH 80K	80	30	180	Ball bearing	120	122	2	13	100 x 85	80 x 60	9	56
HRLK-ALTH 100K	100	40	230	Ball bearing	140	142	2	13	100 x 85	80 x 60	9	65

### Options \*



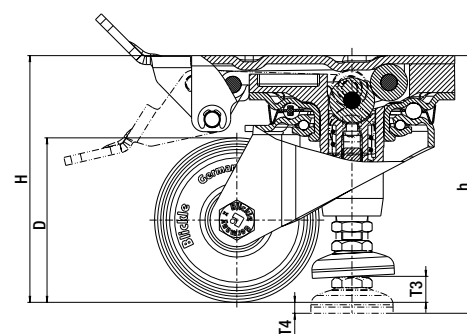
	Illustration POEV series	Illustration ALST series	Illustration ALTH series	with central actuation
Product code suffix				-CS
Available for				on request

\* Options:

1. Stainless steel version (Product code **HRLKX**-...) on request

2. Electrically conductive version, non-marking grey (Product code suffix **-EL**) PO, SPO series on request

3. Matching synthetic adapter plate for total height compensation (+10 mm) for corresponding swivel and fixed castors: **Product code AP1**





Series: HRLK-PO...-HN, HRLK-SPO...-HN,  
HRLK-ALTH...-HN

## Levelling castors with following swivelling operating and release levers, with top plate fitting

 180 - 250 kg

✓RoHS



**Brackets:** HRLK...-HN series - Made of heavy pressed steel, with double ball bearing in the swivel head, swivel head seals. The special Blickle dynamic riveting process of the swivel head results in minimal swivel head play and smooth rolling characteristics with an increased service life achieved by the work hardening of the ball race grooves. Steel truck lock. Height adjustment with swivelling operating and release lever.  
Bolted wheel axle.  
Zinc-plated, blue-passivated, Cr6-free.

**Wheels: PO series** - Made of high-quality, impact-resistant polyamide 6, 70° Shore D, natural white.

**SPO series** - Made of high-quality, impact-resistant polyamide 6, robust, heavy duty design, 70° Shore D, natural white.

**ALTH series** - Tread: Made of high-quality polyurethane-elastomer Blickle Extrathane®, 92° Shore A, light brown, non-marking, non-staining. Wheel centre: Made of die-cast aluminium.

**Bearing types:** Plain bore or two pressed-in ball bearings.

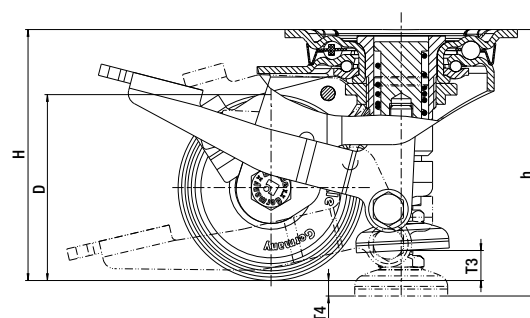


Swivel castors	Wheel Ø (D) [mm]	Wheel width [mm]	Load capacity [kg]	Bearing type	Total height (H) [mm]	Max. total height (h) [mm]	Lifting distance (T4) [mm]	Max foot floor clearance (T3) [mm]	Plate size [mm]	Bolt hole spacing [mm]	Bolt hole Ø [mm]	Offset [mm]
<b>PO series</b>												
HRLK-PO 82G-HN	80	37	230	Plain bore	117	121	4	12	100 x 85	80 x 60	9	56
<b>SPO series</b>												
HRLK-SPO 80G-HN	80	37	250	Plain bore	117	121	4	12	100 x 85	80 x 60	9	56
<b>ALTH series</b>												
HRLK-ALTH 80K-HN	80	30	180	Ball bearing	117	121	4	12	100 x 85	80 x 60	9	56

### Options



	Illustration ALTH series	Electrically conductive version, non-marking grey	With top plate fitting 140x110 / 105x75-80 mm	With top plate fitting in US dimensions 4" x 4 1/2"
Product code suffix		-EL	-3	-14
Available for		Series PO, SPO on request	on request	on request



Series: HRLK-PO...-F, HRLK-ALTH...-F

## Levelling castors with fixed foot and height-adjustable wheels, with top plate fitting

 150 kg

 RoHS



**Brackets:** HRLK...-F series -Made of heavy pressed steel, with double ball bearing in the swivel head, swivel head seals. The special Blickle dynamic riveting process of the swivel head results in minimal swivel head play and smooth rolling characteristics with an increased service life achieved by the work hardening of the ball race grooves. Fixed steel truck lock. Wheel height adjustment with swivelling operating lever. Bolted wheel axle. Zinc-plated, blue-passivated, Cr6-free.

**Wheels: PO series** - Made of high-quality, impact-resistant polyamide 6, 70° Shore D, natural white.

**ALTH series** - Tread: Made of high-quality polyurethane-elastomer Blickle Extrathane®, 92° Shore A, light brown, non-marking, non-staining. Wheel centre: Made of die-cast aluminium.

**Bearing types:** Plain bore or two pressed-in ball bearings.

1

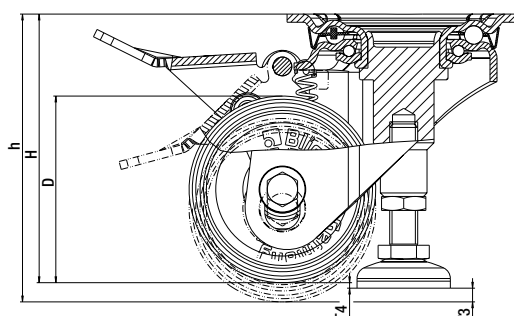


Swivel castors	Wheel Ø (D) [mm]	Wheel width [mm]	Load capacity [kg]	Bearing type	Total height (H) [mm]	Max. total height (h) [mm]	Lifting distance (T4) [mm]	Max foot floor clearance (T3) [mm]	Plate size [mm]	Bolt hole spacing [mm]	Bolt hole Ø [mm]	Offset [mm]
<b>PO series</b>												
HRLK-PO 80G-F	80	32	150	Plain bore	117	122	2	5	100 x 85	80 x 60	9	52
<b>ALTH series</b>												
HRLK-ALTH 80K-F	80	30	150	Ball bearing	117	122	2	5	100 x 85	80 x 60	9	52

### Options



	Illustration ALTH series	Electrically conductive version, non-marking grey	With top plate fitting 140x110 / 105x75-80 mm	With top plate fitting in US dimensions 4" x 4 1/2"
Product code suffix		-EL	-3	-14
Available for		PO series on request	on request	on request



Series: HRLK-PO...-VS

**Levelling castors with adjustment screw, with top plate fitting and polyamide wheel**

 230 - 280 kg       RoHS

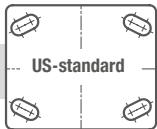


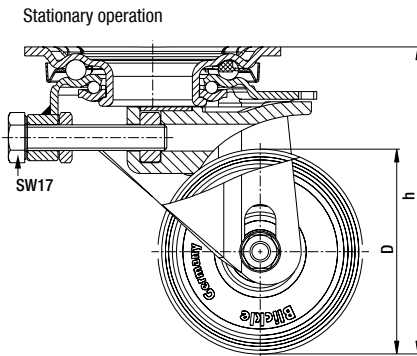
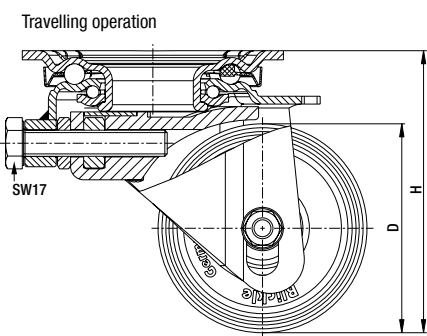
**Brackets:** HRLK...-VS series -Made of heavy pressed steel, with double ball bearing in the swivel head, swivel head seals. The special Blickle dynamic riveting process of the swivel head results in minimal swivel head play and smooth rolling characteristics with an increased service life achieved by the work hardening of the ball race grooves. Adjustment of total height with adjustment screw in stationary operation (SW17). Wheel locking when the adjustment screw is actuated. Bolted wheel axle. Zinc-plated, blue-passivated, Cr6-free.

**Wheels: PO series** – Made of high-quality, impact-resistant polyamide 6, 70° Shore D, natural white.  
**Bearing type:** Plain bore.



Swivel castors	Wheel Ø	Wheel width	Load capacity	Bearing type	Total height	Max. total height	Adjustment range	Plate size	Bolt hole spacing	Bolt hole Ø	Offset
	(D) [mm]	[mm]	[kg]		(H) [mm]	(h) [mm]	[mm]	[mm]	[mm]	[mm]	[mm]
HRLK-PO 82G-VS	80	37	230	Plain bore	108	120	12	100 x 85	80 x 60	9	42
HRLK-PO 100G-VS	100	37	280	Plain bore	128	140	12	100 x 85	80 x 60	9	45


Options	
	With top plate fitting in US dimensions 4" x 4 1/2"
Product code suffix	-14
Available for	on request





Series: HRP-POA, HRSP-POA, HRSP-GSP0

**Levelling castors with integrated truck lock, with top plate fitting, or bolt hole with inside thread, with nylon or heavy duty nylon wheel**

 180 - 2000 kg

✓RoHS



Series HRP/HRSP

Series HRIG

**Brackets:** HRP/HRSP series - Made of die-cast aluminium, with sealed ball bearing in the swivel head, steel top plate fitting.

Powder-coated, ivory colour.

Truck lock made of hard rubber, HRSP series made of black aluminium.

Height adjustment with open-ended spanner or integrated adjustment wheel; HRSP series only with open-ended spanner.

Bolted wheel axle.

Steel parts are zinc-plated, blue-passivated, Cr6-free.

**Wheels: POA series** – Made of high-quality, impact-resistant polyamide 6, 70° Shore D, black.

**GSP0 series** - Made of high-quality, impact-resistant, hard and tough, highly compressed cast polyamide, 80° Shore D, natural beige.

**Bearing type:** Plain bore.



Swivel castors	Wheel Ø	Wheel width	Load capacity *	Bearing type	Total height	Max. total height	Adjustment range	Plate size	Bolt hole spacing	Bolt hole Ø	Offset
	(D) [mm]	[mm]	[kg]		(H) [mm]	(h) [mm]	(T4) [mm]	[mm]	[mm]	[mm]	[mm]
HRP-POA 45G	45	18	180	Plain bore	72	80	8	55 x 55	42 x 42	7	32
HRP-POA 50G	50	24	250	Plain bore	84	90	6	73 x 73	58 x 58	7	38
HRP-POA 63G	63	30	500	Plain bore	104	116	12	90 x 90	70 x 70	9	46
HRP-POA 72G	72	32	750	Plain bore	122	134	12	95 x 95	70 x 70	11	52
HRSP-POA 72G	72	32	1000	Plain bore	122	134	12	95 x 95	70 x 70	11	55
HRSP-GSP0 90G	90	55	2000	Plain bore	130	150	20	100 x 100	70 x 70	13	70

\* Load capacity determined under the following test conditions:

- Speed: max. 1 km/h
- Temperature: +15° C to +30° C
- Hard, horizontal surface without obstacles
- Movement distance: A cooling break of 15 min. is necessary after max. 50 m.

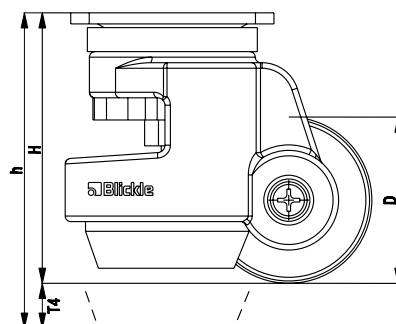
## Options



	Illustration HRSP-GSP0 series	Stainless steel version	With bolt hole female thread **
Product code			HRIG-POA ...
Available for		on request	All HRP series wheel Ø ***

\*\* Wheel Ø 45 mm: M8x12 mm; wheel Ø 50-63 mm: M12x15 mm; wheel Ø 72 mm: M16x16 mm

\*\*\* The maximum total height of the HRIG-POA 63G and HRIG-POA 72G castors is reduced by 2 mm



Series: HRLH-SPO, HRLHD-SPO

**Levelling castors with integrated truck lock, with top plate fitting, with heavy duty polyamide wheel**

 300 - 600 kg       RoHS



**Brackets:** HRLH/HRLHD series - Made of heavy pressed steel, with heavy duty fork and top plate fitting, with heavy duty central kingpin, bolted and secured, with double ball bearings in the swivel head, additionally reinforced with **four specially designed hardened bearing seats**, for special protection against shocks and impacts. Steel truck lock. Height adjustment with flat spanner. Bolted wheel axle. Zinc-plated, blue-passivated, Cr6-free.

**Wheels:** SPO series – Made of high-quality, impact-resistant polyamide 6, robust, heavy duty design, 70° Shore D, natural grey.  
**Bearing type:** Two pressed-in ball bearings.

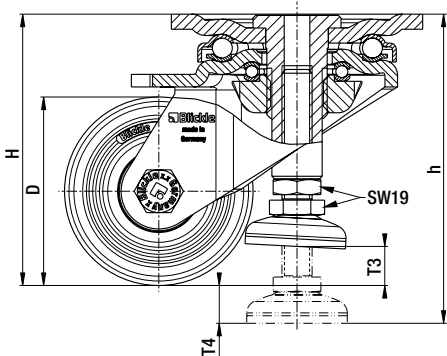


Swivel castor	Double swivel castor	Wheel Ø (D) [mm]	Wheel width [mm]	Load capacity [kg]	Bearing type	Total height (H) [mm]	Max. total height (h) [mm]	Adjustment range (T4) [mm]	Max foot floor clearance (T3) [mm]	Plate size [mm]	Bolt hole spacing [mm]	Bolt hole Ø [mm]	Offset [mm]
HRLH-SPO 75K		75	32	300	Ball bearing	108	123	15	15	100 x 85	80 x 60	9	55
	HRLHD-SPO 75K	75	2 x 32	600	Ball bearing	108	123	15	15	100 x 85	80 x 60	9	55

Options



	Electrically conductive version, non-marking grey	With top plate fitting in US dimensions 4" x 4 1/2"
Product code suffix	-EL	-14
Available for	on request	on request



Series: HRLSD-SPO, HRLSD-GTH

## Welded steel heavy duty levelling castors with adjustable mounting height, with top plate fitting

 1100 - 1300 kg

 RoHS



**Brackets:** HRLSD series - Especially robust welded steel construction with DIN 711 axial grooved ball bearing and DIN 720 tapered roller bearing in the swivel head, dust and splash-proof, with welded guide bushing for the exceedingly strong truck lock. The height of the wheels and the truck lock can be adjusted with an open-ended spanner (width across flats 24 mm). Bolted wheel axle. Zinc-plated, yellow-passivated, Cr6-free.

**Wheels: SPO series** - Made of high-quality, impact-resistant polyamide 6, very robust, heavy duty design, 70° Shore D, natural white.

**GTH series** - Tread: Made of high-quality polyurethane-elastomer Blickle Extrathane®, 92° Shore A, light brown, non-marking, non-staining. Wheel centre: Made of robust grey cast iron.

**Bearing type:** Two pressed-in ball bearings.



Swivel castors	Wheel Ø (D) [mm]	Wheel width [mm]	Load capacity [kg]	Bearing type	Total height (H) [mm]	Max. total height (h) [mm]	Max foot floor clearance * [mm]	Plate size [mm]	Bolt hole spacing [mm]	Bolt hole Ø [mm]	Offset [mm]
<b>SPO series</b>											
HRLSD-SPO 125K	125	2 x 40	1300	Ball bearing	170	210	40	175 x 140	140 x 105	14	58-70
<b>GTH series</b>											
HRLSD-GTH 127K	125	2 x 50	1100	Ball bearing	170	210	40	175 x 140	140 x 105	14	58-70

\* With screwed-in truck lock and screwed in adjustment screw

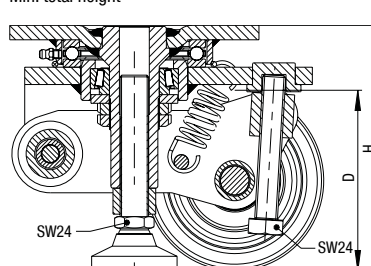
### Options \*\*



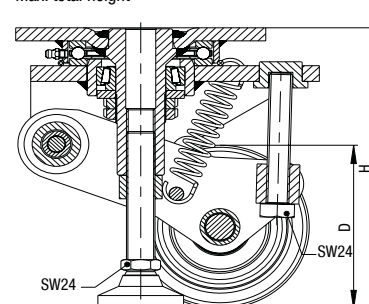
	Illustration SPO series	Electrically conductive version, non-marking grey
Product code suffix		-EL
Available for		SPO series on request

\*\* More options: Further heavy duty designs on request

Min. total height



Max. total height





## Truck locks and jacks



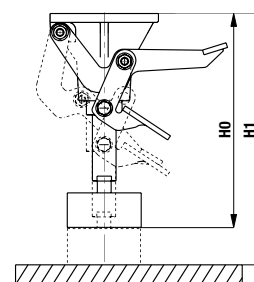
### Truck locks

Truck locks are used to lock the transport unit in the resting position. They are directly attached to the transport unit. Simply by operating the pedal, the load on the transport unit is relieved a little, without lifting it. On actuation the truck lock is spring-loaded by approx. 10 mm. The maximum compression force in combination with the matching swivel and fixed castors is approx. 60 kg. The following Truck locks with the plate size of 100 x 85 mm are compatible with the castor series LE, L and LK. The Truck locks with the plate size of 140 x 110 mm are compatible with the castor series LH, LO and LS. Further versions are available upon request. Zinc-plated, blue-passivated, Cr6-free.

Product code	Total height, not actuated (H0) [mm]	Total height actuated, fully extended (H1) [mm]	Plate size [mm]	Bolt hole spacing [mm]	Bolt hole Ø [mm]
FF 100-1	108	138	100 x 85	80 x 60	9
FF 125-1	133	163	100 x 85	80 x 60	9
FF 125	142	180	140 x 110	105 x 75-80	12,3
FF 150	170	208	140 x 110	105 x 75-80	12,3
FF 160	175	213	140 x 110	105 x 75-80	12,3
FF 200	217	255	140 x 110	105 x 75-80	12,3

FF 125 - FF 200

FF 100-1 + FF 125-1



1

### Jacks

Jacks are used to lift transport units into the resting position. The jack is directly attached to the transport unit. The transport unit is lifted by operating the pedal.

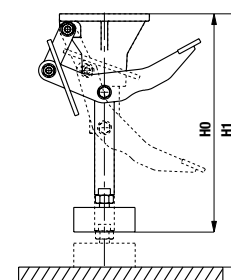
Jacks can be combined with various castor series. For optimum use of the jack, the total height of the actuated jack (H1) should be 5 mm higher than the total height of the swivelling and fixed castors which are used.

Depending on the weight of the person operating the jack the lifting force is 150 kg to 250 kg.

The vertical load on the jack must not exceed 500 kg in the lifted position.

Zinc-plated, blue-passivated, Cr6-free.

Product code	Total height, not actuated (H0) [mm]	Total height actuated (H1) [mm]	Plate size [mm]	Bolt hole spacing [mm]	Bolt hole Ø [mm]
WH 160	166	209	140 x 110	105 x 75-80	12.3
WH 200	207	250	140 x 110	105 x 75-80	12.3
WH 250	257	300	140 x 110	105 x 75-80	12.3



Series: HRLK-PATH...-HYD

**Levelling castor set with hydraulic pump \***

 750 kg (set)       RoHS



1



**Brackets:** HRLK series - Made of heavy pressed steel, with double ball bearing in the swivel head, swivel head seals. The special Blickle dynamic riveting process of the swivel head results in minimal swivel head play and smooth rolling characteristics with an increased service life achieved by the work hardening of the ball race grooves. Steel truck lock with base plate made from thermoplastic rubber-elastomer. Height adjustment via a hydraulic cylinder with integrated return spring. Bolted wheel axle. Zinc-plated, blue-passivated, Cr6-free.

**Wheels: PATH series** - Tread: Made of high-quality thermoplastic polyurethane, 94° Shore A, dark grey, low-noise operation, low rolling and swivel resistance, good floor preservation, high abrasion resistance. Wheel centre: Made of high-quality, impact-resistant polyamide 6, silver grey. **Bearing type:** Central extrusion-coated ball bearings with integrated synthetic thread guard.

Swivel castor **	Wheel Ø	Wheel width	Max. lifting force per levelling castor	Max. lifting force per system	Total height (truck lock not actuated)	Total height (truck lock actuated)	Lifting distance	Max foot floor clearance	Plate size	Bolt hole spacing	Bolt hole Ø	Offset
	(D) [mm]	(T2) [mm]	[kg]	[kg]	(H) [mm]	(h) [mm]	(T4) [mm]	(T3) [mm]	[mm]	[mm]	[mm]	[mm]
HRLK-PATH 100K-FK-HYD set	100	32	240	750	150	160	10	20	100 x 85	80 x 60	9	65

\*\* Stainless steel version (on request)  
Electrically conductive version (on request)

**\* Set consisting of**

- 4 levelling castors (with synthetic adapter plate and pre-assembled hydraulic hose)
- Hydraulic pump, incl. hand crank
- Installation set with operating instructions





#### Application:

By the use of levelling castors with an integrated, hydraulically actuated truck lock, mobile equipment and transport units of up to 750 kg can be simply converted into stable work surfaces. The hydraulic unit from the Swiss manufacturer Ergoswiss, which has been tried and tested over many years, enables centralised, simultaneous and ergonomic lifting of four levelling castors.

#### Description:

The hydraulic cylinders of the individual levelling castors are connected via hoses to a hydraulic pump which is mounted centrally on the truck. On actuation of the hand crank, hydraulic oil flows from the hydraulic pump into the hydraulic cylinders of the levelling castors. Due to the lifting movement of the truck locks, the levelling castors are lifted synchronously and silently. Uneven surfaces can be compensated for manually with the adjustable height truck lock using an open ended spanner. After actuation, the hand crank can be folded in, so that it is concealed behind the edge of the table or the unit.

During installation, the hydraulic hoses (3 m each) which are mounted on the levelling castors are shortened to the required length and connected to the hydraulic pump.

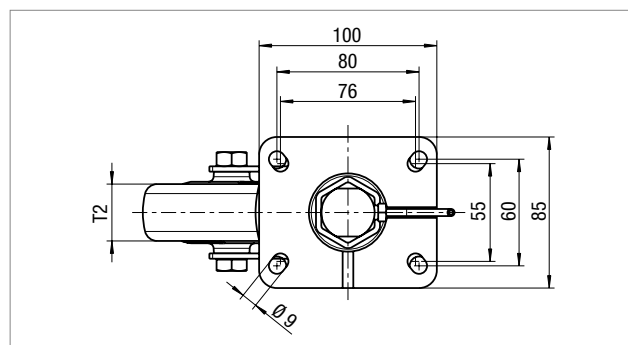
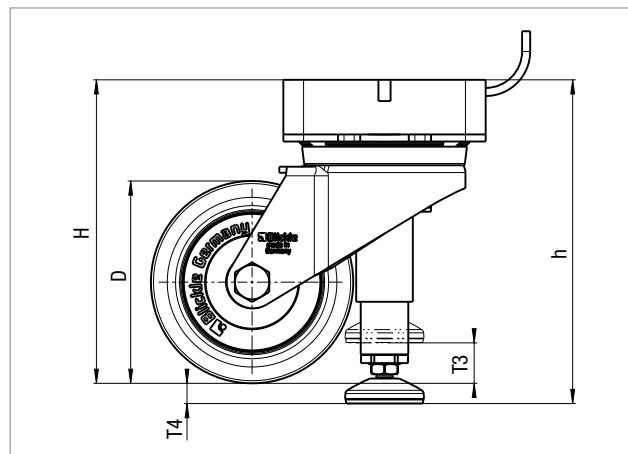
#### Hydraulic pump:

Pump housing made from colourless anodised aluminium, 4 integrated hydraulic cylinders with 4 hose connections, folding hand crank, 3 through holes ( $\varnothing$  6.8 mm) for mounting the pump.

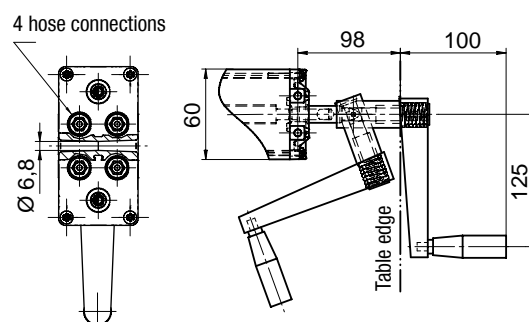
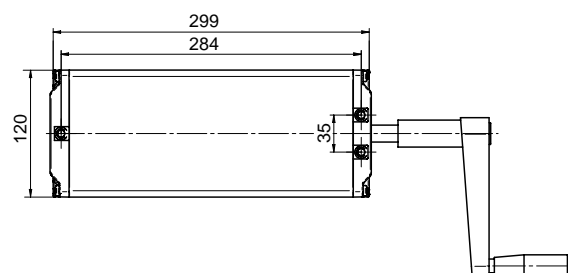
- Length of hydraulic hoses: 3 m
- Diameter of hydraulic hoses 4 mm
- Hydraulic pump (LxWxH) 299 x 120 x 60 mm

#### Installation set (incl.):

- 1 Double ring spanner with special opening
- 1 Hose cutter
- 1 Magnet
- 5 Clamping rings
- 1 Connecting screw (as replacement)
- Operating instructions



Hydraulic pump with folding hand crank





BLICKLE INTERNATIONAL.



Blickle France



Blickle Finland



Blickle Switzerland



Blickle Czech Republic



Blickle Canada

Blickle sales companies:

Austria · Belgium · Canada · China  
Czech Republic · Finland · France · Great Britain  
Italy · Netherlands · Norway · Spain  
Sweden · Switzerland · Turkey · USA

Competence does not recognise any borders.

**Production: Germany.  
Sales: Worldwide.**

**We put the world in motion in all senses of the word. We are represented by our own subsidiaries or sales partners in over 120 countries around the world. Our international customers are well cared for by 16 sales companies in Europe, North America and Asia.**

Wherever you are looking for us, we are already there: Throughout the world, we set store by proximity to our customers and good, quick support. Thanks to our dense network, we are able to assist our customers competently and quickly. Our local specialists are there to help you, even with complex technical questions. Orders are quickly dispatched from our well-stocked warehouse. Reliable logistics quickly bring the goods to where they are needed – anywhere in the world.

Simple to use - Personal safety in mind.

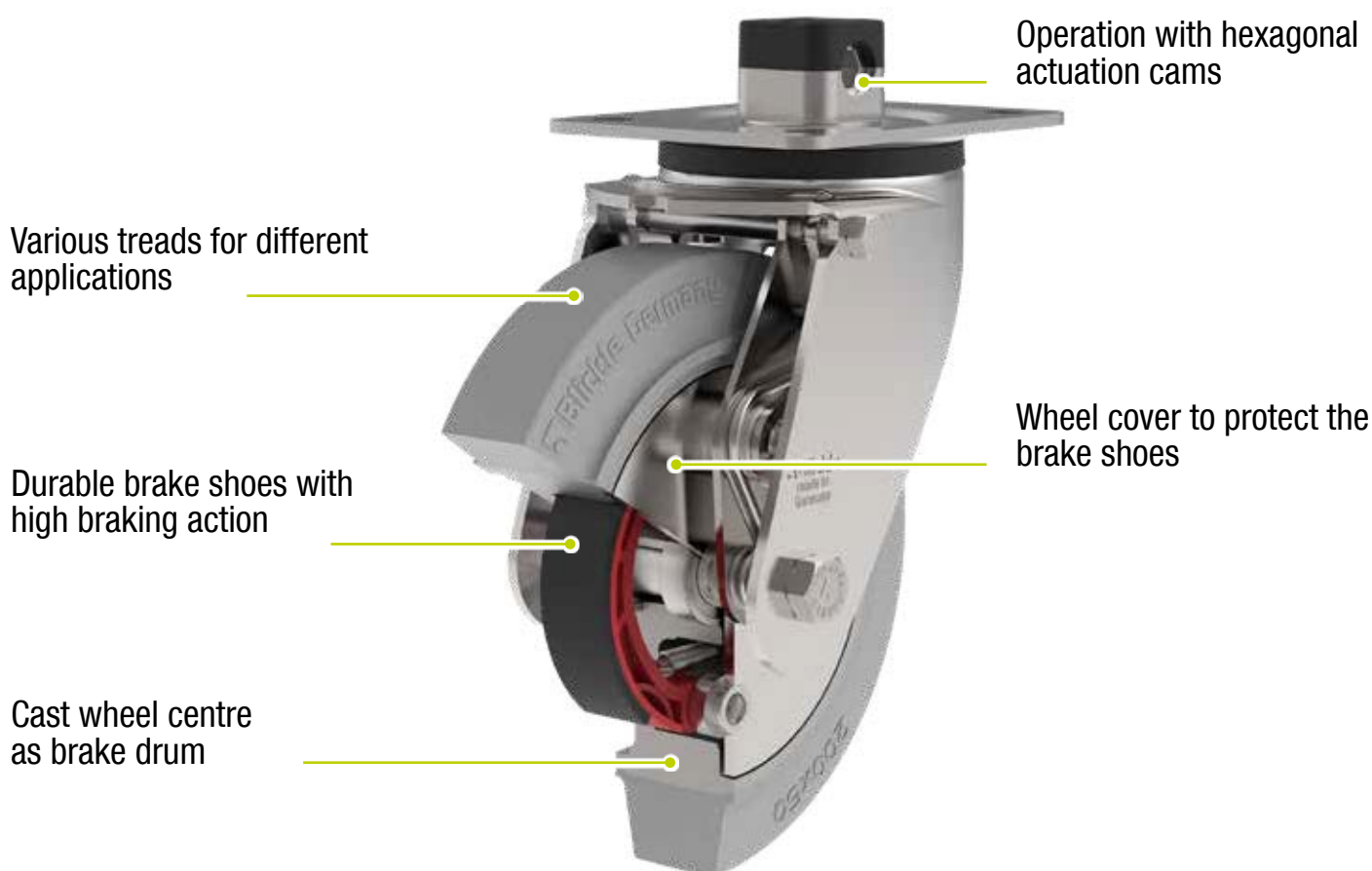
## Blickle swivelling and fixed castors with drum and dead man brake



2

For demanding safety requirements.

## Swivel and fixed castors with drum and dead man brakes.



### Working safety at the highest level – drum and dead man brakes from Blickle.

**Blickle drum-braked castors ensure that the transport operator retains control of the vehicle at all times – even during travel.**

When the drum brake is actuated, two brake shoes integrated into the wheel centres are pressed onto the cast wheel centre which functions as a brake drum. Unlike conventional braking systems for wheels and castors, which are generally only actuated when at a standstill, the speed of the carriage can be reduced while in motion with the drum brake.

For even higher safety requirements, Blickle also has a broad portfolio of steering and fixed castors with dead man function. Here, the main focus is on personal protection. In the non-actuated state, the brake is applied. The carriage can only be moved when the brakes are released. They are therefore suitable for use as driving and parking brake systems. The simple operability, the high braking forces as well as reliable operation of the castor using Blickle drum or dead man brakes meet the highest demands for industrial safety.



Swivel castors with dead man brake

 400 kg

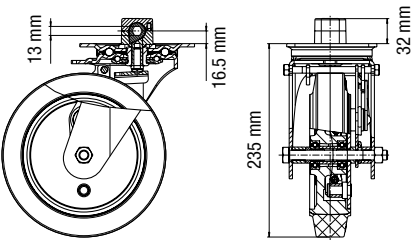
 RoHS



**Swivel castors with dead man brake:**  
Swivel castors with dead man brake are based on the principle of the drum-braked castor, but the braking performance is actually ensured by an integrated spring in the non-actuated state. Operation occurs via a hexagonal actuation cam.



**Swivel castors with dead man brake and swivel head brake:**  
Swivel castors with dead man and swivel head brakes are based on the principle of the drum-braked castor, however the braking action is provided by an integrated spring in the non-actuated state. The swivel head is firmly secured against twisting. Operation occurs via a hexagonal actuation cam.



**GEV wheel series:**  
Tyres: Made of high-quality elastic solid rubber, featuring smooth-rolling quality, 65° Shore A, non-marking grey. Wheel centre: Made of robust grey cast iron, painted, silver, with two pressed-in ball bearings.



**The GST wheel series:**  
Tread: Made of high-quality polyurethane-elastomer Blickle Softhane®, 75° Shore A, green, non-marking, non-staining. Wheel centre: Made of robust grey cast iron, painted, silver, with two pressed-in ball bearings.



**GTH wheel series:**  
Tread: Made of high-quality polyurethane-elastomer Blickle Extrathane®, 92° Shore A, light brown, non-marking, non-staining. Wheel centre: Made of robust grey cast iron, painted, silver, with two pressed-in ball bearings.

2

Swivel castors with dead man brake	Swivel castors with dead man brake and swivel head brake	Wheel Ø [mm]	Wheel width [mm]	Load capacity [kg]	Bearing type	Total height [mm]	Plate size [mm]	Bolt hole spacing [mm]	Bolt hole Ø [mm]	Width across flats [mm]	Offset [mm]
L-GEV 200K-TM13-SG	L-GEV 200K-TTM13-SG	200	50	400	Ball bearing	235	140 x 110	105 x 75-80	11	13	65
L-GST 200K-TM13	L-GST 200K-TTM13	200	50	400	Ball bearing	235	140 x 110	105 x 75-80	11	13	65
L-GTH 200K-TM13	L-GTH 200K-TTM13	200	50	400	Ball bearing	235	140 x 110	105 x 75-80	11	13	65

Options



	Additional information Wheel versions	Direction lock (retro-fit) 1 x 360°	Actuating cams with 11mm width across flats
Product code suffix	GB, GBS Series	RI-05.03	
Available for	On request	All sizes	On request

## Fixed castors with drum and dead man's brake

450 - 950 kg

✓RoHS



Fixed castor with drum brake

Fixed castor with dead man's brake



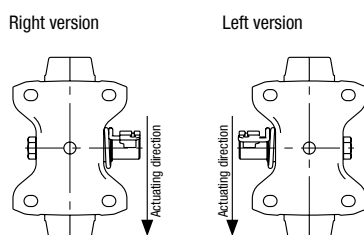
### Fixed castors with drum brake:

Fixed castors with a drum brake can be operated by methods such as a cable pull or a lever arm. The enclosed design protects the brake shoes against corrosion and dirt. Therefore the brake performance is not affected by wet conditions or road contamination.



### Fixed castors with dead man's brake:

Fixed castors with a dead man's brake are based on the drum braked castor design, however an integrated spring ensures the brake is applied in a non-operated condition. With a cable pull or lever arm the brake can be released.



### PS-wheel series:

Tyres: Pneumatic tyres with zig-zag profile, 6 ply rating, black.  
Rims: Made of rugged grey cast iron, lacquered, white aluminium, with two pressed-in ball bearings.



### VLE-wheel series:

Tyres: Made of super-elastic solid rubber, 3-component tyre with zig-zag profile, tough and hard rubber core, super-elastic cushion layer, abrasion-resistant tread, black.  
Rims: Made of rugged grey cast iron, lacquered, white aluminium, with two pressed-in ball bearings.



### GST-wheel series:

Tread: Made of high-quality polyurethane-elastomer Blickle Softthane®, 75° shore A, green, non-marking, non-staining.  
Wheel centre: Made of rugged grey cast iron, lacquered, silver, with two pressed-in ball bearings.



### GTH-wheel series:

Tread: Made of high-quality polyurethane-elastomer Blickle Extrathane®, 92° shore A, light brown, non-marking, non-staining.  
Wheel centre: Made of rugged grey cast iron, lacquered, silver, with two pressed-in ball bearings.



### GB-wheel series:

Tread: Made of high-quality polyurethane-elastomer Blickle Bestthane®, 92° shore A, high dynamic load capacity, brown, non-marking, non-staining. Wheel centre: Made of rugged grey cast iron, lacquered, silver, with two pressed-in ball bearings.



### GEV-wheel series:

Tyres: Made of high-quality elastic solid rubber in smooth rolling quality, 65° shore A, black or non-marking grey.  
Wheel centre: Made of rugged grey cast iron, lacquered, silver, with two pressed-in ball bearings.

Fixed castors with drum brake	Fixed castors with dead man's brake *	Wheel Ø [mm]	Wheel / Tyre width [mm]	Load capacity [kg]	Bearing type	Total height [mm]	Plate size [mm]	Bolt hole spacing [mm]	Bolt hole Ø [mm]
B-GEV 160K-TB	B-GEV 160K-TM	160	50	450	Ball bearing	195	140 x 110	105 x 75-80	11
B-GEV 160K-TB-SG	B-GEV 160K-TM-SG	160	50	450	Ball bearing	195	140 x 110	105 x 75-80	11
B-GTH 160K-TB	B-GTH 160K-TM	160	50	600	Ball bearing	195	140 x 110	105 x 75-80	11
BH-GTH 160K-TB	BH-GTH 160K-TM	160	50	800	Ball bearing	202	140 x 110	105 x 75-80	11
B-GEV 180K-TB	B-GEV 180K-TM	180	50	525	Ball bearing	215	140 x 110	105 x 75-80	11
B-GEV 180K-TB-SG	B-GEV 180K-TM-SG	180	50	525	Ball bearing	215	140 x 110	105 x 75-80	11
B-GTH 180K-TB	B-GTH 180K-TM	180	50	600	Ball bearing	215	140 x 110	105 x 75-80	11
BH-GTH 180K-TB	BH-GTH 180K-TM	180	50	850	Ball bearing	223	140 x 110	105 x 75-80	11
B-GEV 200K-TB	B-GEV 200K-TM	200	50	600	Ball bearing	235	140 x 110	105 x 75-80	11
B-GEV 200K-TB-SG	B-GEV 200K-TM-SG	200	50	600	Ball bearing	235	140 x 110	105 x 75-80	11
B-GST 200K-TB	B-GST 200K-TM	200	50	600	Ball bearing	235	140 x 110	105 x 75-80	11
B-GTH 200K-TB	B-GTH 200K-TM	200	50	600	Ball bearing	235	140 x 110	105 x 75-80	11
B-GB 200K-TB	B-GB 200K-TM	200	50	600	Ball bearing	235	140 x 110	105 x 75-80	11
BH-GST 200K-TB	BH-GST 200K-TM	200	50	800	Ball bearing	245	140 x 110	105 x 75-80	11
BH-GTH 200K-TB	BH-GTH 200K-TM	200	50	900	Ball bearing	245	140 x 110	105 x 75-80	11
BH-GB 200K-TB	BH-GB 200K-TM	200	50	900	Ball bearing	245	140 x 110	105 x 75-80	11
BS-VLE 410K-TB *		405	105	950	Ball bearing	473	200 x 160	160 x 120	14
BS-PS 430K-TB *		420	115	650	Ball bearing	480	200 x 160	160 x 120	14

\* Product code has to be supplemented by the suffixes L or R for left and right version.

The new series ALEV...-SG-AS by Blickle.

## Antistatic wheels and castors with non-marking, grey rubber tyre.



3



Innovative and electrically conductive.

## New from Blickle: ALEV...-SG-AS series.



3

### Innovation for sensitive areas of use: Antistatic castors with elastic solid-rubber tyres in a non-marking grey version.

**Blickle's comprehensive portfolio of electrically conductive wheels and castors is enhanced by an innovative new feature: Anti-static castors with elastic solid-rubber tyres in a non-marking grey version.**

Anti-static wheels and castors are important system components, for example in medical technology, the electrical and semiconductor industry, the automotive industry or in hospitals. Among other things, they are used for transport trolleys. There, they prevent painful electrostatic discharges which are caused by the trolley or the goods which are transported, and protect sensitive goods from damage.

Until now, users had to use black tyres for electrically conductive wheels with solid rubber tyres. However, these have the disadvantage that they can leave marks on many floor surfaces. Especially in industries with stringent hygiene requirements, this results in an enormous amount of work and high cleaning costs to remove these marks. The Blickle ALEV wheel series now has an anti-static version with non-marking grey tyres made from elastic solid rubber. These have a maximum leak resistance of  $10^7$  Ohm as well as a hardness of 65° Shore A and do not leave any marks when in use.





Series: ALEV...-SG-AS

## Heavy duty wheels with elastic solid rubber tyres 'Blickle EasyRoll', with aluminium wheel centre, antistatic

 200 - 550 kg

 RoHS



<b>Tread &amp; tyre hardness</b>	 65° shore A
<b>Temperature resistance</b>	-25° C - +80° C temporarily up to +100° C
<b>Rolling resistance</b>	 good
<b>Operating noise</b>	 very good
<b>Floor surface preservation</b>	 very good

**Blickle**  
**EasyRoll**



### ALEV...-SG-AS wheel series:

**Tyres:** Made of high-quality elastic solid rubber in smooth rolling quality 'Blickle EasyRoll', 65° shore A hardness, very high operational comfort, low-noise operation, low rolling resistance, very good floor preservation, colour grey, **non-marking, antistatic**, vulcanised onto the wheel centre.

**Wheel centre:** Made of die-cast aluminium.

#### Bearing type:

- Ball bearing: Two pressed-in ball bearings, lubricated with long-life grease.

#### Other features:

Leak resistance  $\leq 10^7$  Ω.

Chemical resistance to many aggressive substances, except oils (for more information please refer to page 36-37 of the Blickle general catalogue G15).

Operating temperature: -25° C to +80° C, temporarily up to +100° C.

At ambient temperatures above +60° C the load capacity is reduced.

Maintenance-free under standard conditions.

Wheels	Wheel Ø (D) [mm]	Tyre width (T2) [mm]	Load capacity [kg]	Bearing type	Axle bore Ø (d) [mm]	Hub length (T1) [mm]
<b>ALEV 100/15K-SG-AS</b>	100	40	200	Ball bearing	15	40
<b>ALEV 125/15K-SG-AS</b>	125	40	250	Ball bearing	15	45
<b>ALEV 160/20K-SG-AS</b>	160	50	350	Ball bearing	20	60
<b>ALEV 200/20K-SG-AS</b>	200	50	450	Ball bearing	20	60
<b>ALEV 200/25K-SG-AS</b>	200	50	450	Ball bearing	25	60
<b>ALEV 250/20K-SG-AS</b>	250	50	550	Ball bearing	20	60
<b>ALEV 250/25K-SG-AS</b>	250	50	550	Ball bearing	25	60

**More**  
options in the  
Blickle general  
catalogue  
G15!

**Options**



Electrically  
conductive version,  
black tyre \*

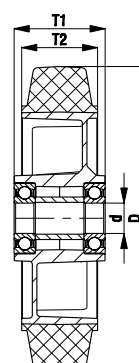
**Product code suffix**

**-EL**

Available for

wheel Ø 100, 125,  
200, 250 mm

\* Leak resistance  $\leq 10^4$  Ω

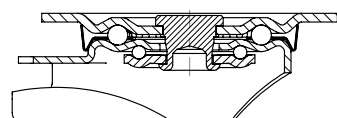


Series: L-ALEV...-SG-AS, B-ALEV...-SG-AS,  
BH-ALEV...-SG-AS

**Pressed steel castors, medium duty brackets,  
with top plate fitting, wheel with elastic solid  
rubber tyre 'Blickle EasyRoll', antistatic**

200 - 500 kg

✓RoHS



**Blickle  
EasyRoll**



**Brackets:** L/B/BH series - Made of pressed steel, swivel bracket with double ball bearing in the swivel head, strong central kingpin (wheel Ø 160-250 mm), swivel head seals. The special Blickle dynamic riveting process of the swivel head results in minimal swivel head play and smooth rolling characteristics with an increased service life achieved by the work hardening of the ball race grooves. Bolted wheel axle. Zinc-plated, blue-passivated, Cr6-free.

**Wheels:** ALEV...-SG-AS series - Tyres: Made of high-quality elastic solid rubber in smooth rolling quality 'Blickle EasyRoll', 65° shore A, grey, **non-marking, antistatic**, leak resistance ≤10' Ω.

Wheel centre: Made of die-cast aluminium.  
Bearing type: Two pressed-in ball bearings.



Swivel castors	Fixed castors	Swivel castors with 'stop-fix' brake	Wheel Ø [mm]	Tyre width [mm]	Load capacity [kg]	Bearing type	Total height [mm]	Plate size [mm]	Bolt hole spacing [mm]	Bolt hole Ø [mm]	Offset swivel castor [mm]
L-ALEV 100K-SG-AS	B-ALEV 100K-SG-AS	L-ALEV 100K-FI-SG-AS	100	40	200	Ball bearing	125	100 x 85	80 x 60	9	36
L-ALEV 125K-SG-AS	B-ALEV 125K-SG-AS	L-ALEV 125K-FI-SG-AS	125	40	200	Ball bearing	150	100 x 85	80 x 60	9	40
L-ALEV 160K-SG-AS	B-ALEV 160K-SG-AS	L-ALEV 160K-FI-SG-AS	160	50	350	Ball bearing	195	140 x 110	105 x 75-80	11	60
L-ALEV 200K-SG-AS	B-ALEV 200K-SG-AS	L-ALEV 200K-FI-SG-AS	200	50	400	Ball bearing	235	140 x 110	105 x 75-80	11	65
L-ALEV 250K-3-SG-AS	BH-ALEV 250K-SG-AS	*	250	50	500	Ball bearing	295	140 x 110	105 x 75-80	11	77

\* For the 'stop-top' brake version refer to 'Options'

**More  
options in the  
Blickle general  
catalogue  
G15!**

**Options**



	Electrically conductive version, black tyre	With 'stop-top' brake	With central braking system 'central-stop'	Directional lock (retro fit) 1 x 360°	With synthetic (-FP) or steel (-FS) foot guard ***
<b>Product code suffix</b>	<b>-EL</b>	<b>-ST</b>	<b>-CS11</b>	<b>refer to **</b>	<b>-FP / -FS</b>
<b>Available for</b>	wheel Ø 100, 125, 200, 250 mm	all sizes	wheel Ø 160+200 mm	for wheel Ø refer to **	upon request


\*\* RI-03.01 available for wheel Ø 100 - 125 mm, RI-05.03 available for wheel Ø 160 - 200 mm (only for swivel castors without brake)

\*\*\* Synthetic foot guard (-FP) for wheel Ø 125 mm



Series: LH-ALEV...-SG-AS, BH-ALEV...-SG-AS

**Pressed steel castors, heavy duty brackets, with top plate fitting, wheel with elastic solid rubber tyre 'Blickle EasyRoll', antistatic**

 200 - 550 kg

 RoHS



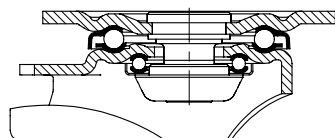
**Blickle  
EasyRoll**



**Brackets:** LH/BH series - Made of heavy pressed steel, swivel bracket with heavy fork and top plate, very strong bolted and secured central kingpin, double ball bearing in the swivel head, additionally reinforced by the integration of **four specially shaped and hardened bearing seats** resulting in a very high resistance to shock and impact loads. Bolted wheel axle. Zinc-plated, blue-passivated, Cr6-free.

**Wheels:** ALEV...-SG-AS series - Tyres: Made of high-quality elastic solid rubber in smooth rolling quality 'Blickle EasyRoll', 65° shore A, grey, **non-marking, antistatic**, leak resistance ≤10' Q.

Wheel centre: Made of die-cast aluminium. Bearing type: Two pressed-in ball bearings.



Swivel castors	Fixed castors	Swivel castors with 'stop-fix' brake	Wheel Ø [mm]	Tyre width [mm]	Load capacity [kg]	Bearing type	Total height [mm]	Plate size [mm]	Bolt hole spacing [mm]	Bolt hole Ø [mm]	Offset swivel castor [mm]
LH-ALEV 100K-1-SG-AS	BH-ALEV 100K-1-SG-AS	LH-ALEV 100K-1-FI-SG-AS	100	40	200	Kugellager	140	100 x 85	80 x 60	9	45
LH-ALEV 100K-3-SG-AS	BH-ALEV 100K-3-SG-AS	LH-ALEV 100K-3-FI-SG-AS	100	40	200	Kugellager	140	140 x 110	105 x 75-80	11	45
LH-ALEV 125K-1-SG-AS	BH-ALEV 125K-1-SG-AS	LH-ALEV 125K-1-FI-SG-AS	125	40	250	Kugellager	165	100 x 85	80 x 60	9	45
LH-ALEV 125K-3-SG-AS	BH-ALEV 125K-3-SG-AS	LH-ALEV 125K-3-FI-SG-AS	125	40	250	Kugellager	165	140 x 110	105 x 75-80	11	45
LH-ALEV 160K-SG-AS	BH-ALEV 160K-SG-AS	LH-ALEV 160K-FI-SG-AS	160	50	350	Kugellager	202	140 x 110	105 x 75-80	11	65
LH-ALEV 200K-SG-AS	BH-ALEV 200K-SG-AS	LH-ALEV 200K-FI-SG-AS	200	50	450	Kugellager	245	140 x 110	105 x 75-80	11	70
LH-ALEV 250K-SG-AS	BH-ALEV 250K-SG-AS	*	250	50	550	Kugellager	295	140 x 110	105 x 75-80	11	82

\* For the 'stop-top' brake version refer to 'Options'

**More  
options in the  
Blickle general  
catalogue  
G15!**

**Options**



	Electrically conductive version, black tyre	With 'stop-top' brake	With central braking system 'central-stop'	With 'ideal-stop' brake ttl. height +17mm **	Directional lock (retro-fit) 1 x 360°	With steel foot guard
Artikel-Nr.-Zusatz	-EL	-ST	-CS13	-IS	refer to ***	-FS
Lieferbar für	wheel Ø 100, 125, 200, 250 mm	all sizes	wheel Ø 160, 200, 250 mm	wheel Ø 160, 200, 250 mm	for wheel Ø and plate dimensions refer to ***	upon request

\*\* Matching synthetic adapter plate for total height compensation for swivel and fixed castors without 'ideal-stop' brake: **Product code AP3**

\*\*\* **RI-04.01** available for wheel Ø 100 - 125 mm with plate 100x85 mm, **RI-04.03** available for wheel Ø 100 - 125 mm with plate 140x110 mm, **RI-05.03** available for wheel Ø 160 - 200 mm (only for swivel castors without brake)

MATERIAL EXPERTISE.



Striving for perfection.

## Expertise. Creativity. Know-how. This is how innovations are born.

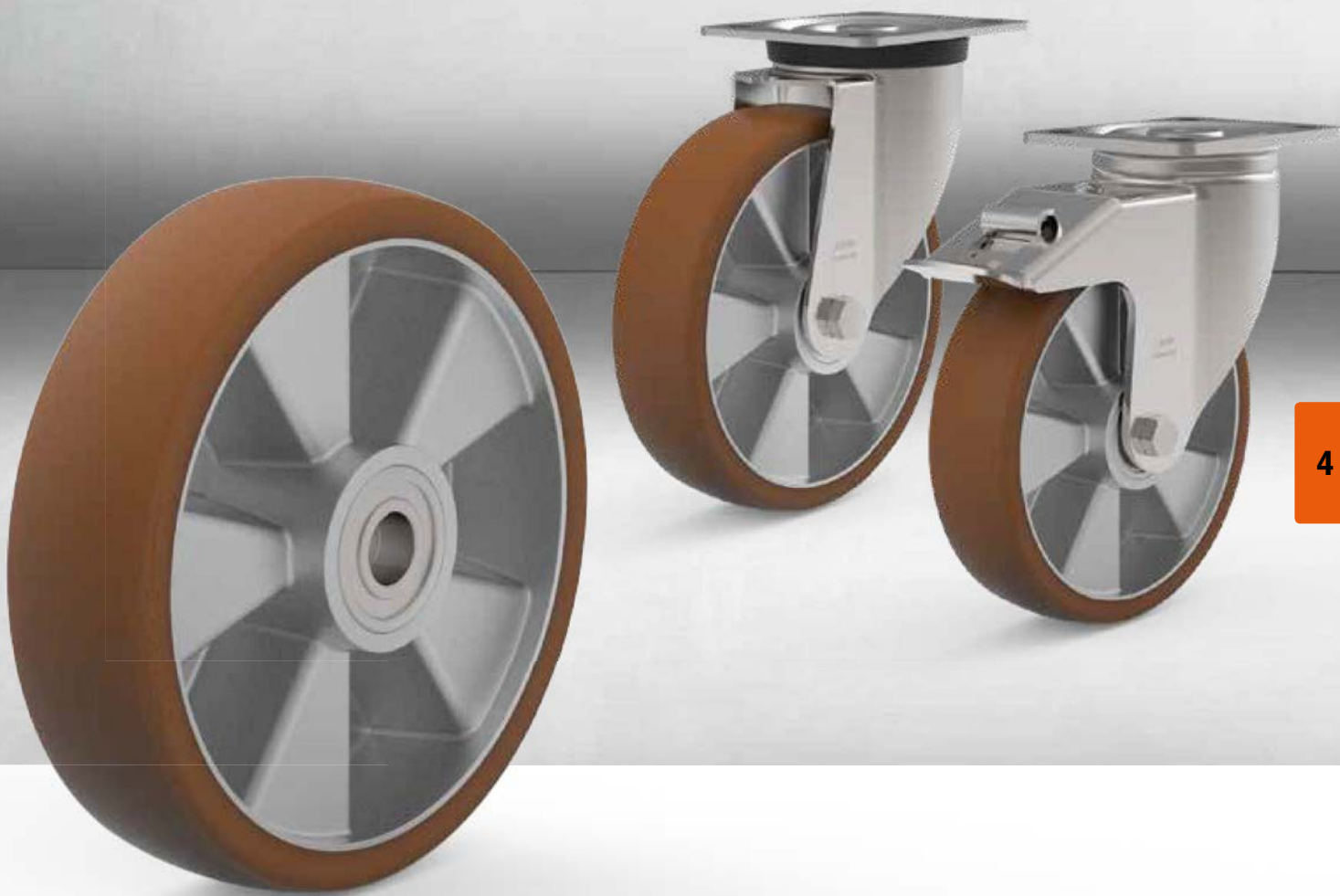
**If you want to create the best product possible, then you need the perfect material. Over the past several decades, Blickle has become the leading expert for polyurethane treads.**

In the case of polyurethane, this depends on every single production detail – from mixing to processing. The recipe for this material is one of the pillars of quality, the other is its processing.

We sandblast, clean and prime the metal wheel centres completely automatically. The polyurethane is cast in a low-pressure hot-casting process using computer-controlled casting machines. Necessary additives, such as pigments, activators or antistatic agents, can simply be added. Tempering is carried out in several defined cycles, so that the final PU has the optimum mechanical and dynamic properties.

The new series ALB with optimised tread geometry by Blickle.

## Wheels and castors with reduced rolling and swivel resistance.



4



High load capacity and great operational comfort.

## The new ALB wheel series with specially optimised tread geometry.

### Comparison of the rolling and swivel resistance of different polyurethane wheels (wheel Ø 200 mm)

#### ALTH series

Rolling resistance 1.0 % \*

Swivel resistance 2.9 % \*

#### ALBS series

Rolling resistance 0.8 % \*

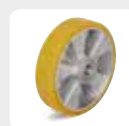
Swivel resistance 2.5 % \*

#### ALB series

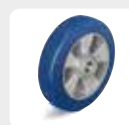
Rolling resistance 0.6 % \*

Swivel resistance 1.7 % \*

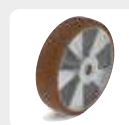
low Rolling and swivel resistance high



- Blickle Extrathane®
- Thin tread
- Tread radius R300
- Tread hardness 92° shore A



- Blickle Besthane® Soft
- Thick tread
- Tread radius R90
- Tread hardness 75° shore A



- Blickle Besthane®
- Thin tread
- Tread radius R100
- Tread hardness 92° shore A

\* Tested new and under ideal conditions at 300 kg load and identical bracket

4

## Simpler and easier handling for in-house material transport: The new ALB wheel series.

Blickle has developed the new ALB wheel series in order to further reduce starting, rolling and swivel resistance. For demanding applications in intra-logistics with high transport loads, reducing the required forces for moving transport units plays an increasingly important role.

By using the reaction-cast Blickle Besthane® polyurethane elastomer as the tread material in combination with a specially optimised tread geometry, up to 40 percent lower rolling resistance in comparison to the standard Blickle polyurethane wheels.

Due to their high load capacity, the wheels are also ideal for use with tugger trains.

Most of all, the new ALB wheel series are already achieving significant success in areas where the highest demands are placed on ergonomics and industrial safety.





Series: ALB

**Heavy duty wheels  
with Blickle Besthane® polyurethane tread  
with aluminium wheel centre**

 350 - 1000 kg       RoHS



Tread & tyre hardness

92° shore A

Temperature resistance

-25° C - +70° C  
temporarily up to +90° C

Rolling resistance

excellent

Operating noise

good

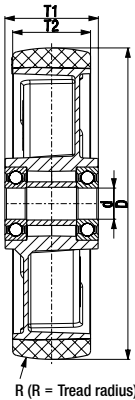
Floor surface preservation

good



**ALB-wheel series:**  
**Tread:** Made of high-quality, reaction-injected polyurethane-elastomer Blickle Besthane®, 92° shore A hardness, low-noise operation, very low rolling resistance, **high dynamic load capacity**, good floor preservation, high abrasion resistance, high cut and tear propagation resistance, colour brown, non-marking, non-staining, very good chemical connection with the wheel centre.  
**Wheel centre:** Made of die-cast aluminium.  
**Bearing type:**  
• Ball bearing: Two pressed-in ball bearings, lubricated with long-life grease.  
**Other features:**  
High chemical resistance to many aggressive substances (for more information please refer to page 36-37 of the Blickle general catalogue G15).  
Operating temperature: -25° C to +70° C, temporarily up to +90° C.  
At ambient temperatures above +40° C the load capacity is reduced.  
Maintenance-free under standard conditions.

Wheels	Wheel Ø (D) [mm]	Wheel width (T2) [mm]	Load cap. at 4 km/h [kg]	Load cap. at 10 km/h [kg]	Load cap. at 16 km/h [kg]	Bearing type	Axle bore Ø (d) [mm]	Hub length (T1) [mm]
ALB 101/15K	100	40	350	200	-	Ball bearing	15	40
ALB 125/15K	125	40	350	200	-	Ball bearing	15	45
ALB 150/20K	150	50	500	280	-	Ball bearing	20	60
ALB 160/20K	160	50	550	300	-	Ball bearing	20	60
ALB 200/20K	200	50	800	450	350	Ball bearing	20	60
ALB 250/25K	250	60	1000	550	400	Ball bearing	25	70



Series: L-ALB, B-ALB, BH-ALB

**Pressed steel castors, medium duty brackets,  
with top plate fitting, wheel with  
Blickle Besthane® polyurethane tread**

 200 - 500 kg

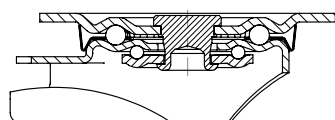
✓RoHS



**Brackets:** L/B/BH series - Made of pressed steel, swivel bracket with double ball bearing in the swivel head, strong central kingpin (wheel Ø 150-250 mm), swivel head seals. The special Blickle dynamic riveting process of the swivel head results in minimal swivel head play and smooth rolling characteristics with an increased service life achieved by the work hardening of the ball race grooves. Bolted wheel axle. Zinc-plated, blue-passivated, Cr6-free.

**Wheels:** ALB series - Tread: Made of high-quality polyurethane-elastomer Blickle Besthane®, 92° shore A, **high dynamic load capacity**, brown, non-marking, non-staining.

Wheel centre: Made of die-cast aluminium. Bearing type: Two pressed-in ball bearings.



Swivel castors	Fixed castors	Swivel castors with 'stop-fix' brake	Wheel Ø [mm]	Wheel width [mm]	Load capacity [kg]	Bearing type	Total height [mm]	Plate size [mm]	Bolt hole spacing [mm]	Bolt hole Ø [mm]	Offset swivel castor [mm]
L-ALB 101K	B-ALB 101K	L-ALB 101K-FI	100	40	200	Ball bearing	125	100 x 85	80 x 60	9	36
L-ALB 125K	B-ALB 125K	L-ALB 125K-FI	125	40	200	Ball bearing	150	100 x 85	80 x 60	9	40
L-ALB 150K	B-ALB 150K	L-ALB 150K-FI	150	50	400	Ball bearing	190	140 x 110	105 x 75-80	11	60
L-ALB 160K	B-ALB 160K	L-ALB 160K-FI	160	50	400	Ball bearing	195	140 x 110	105 x 75-80	11	60
L-ALB 200K	B-ALB 200K	L-ALB 200K-FI	200	50	400	Ball bearing	235	140 x 110	105 x 75-80	11	65
L-ALB 250K	BH-ALB 250K	*	250	60	500	Ball bearing	295	140 x 110	105 x 75-80	11	77

\* For the 'stop-top' brake version refer to 'Options'

## Options



	With 'stop-top' brake	With central braking system 'central-stop'	Directional lock (retro fit) 1 x 360°	With synthetic (-FP) or steel (-FS) foot guard ***
Product code suffix	-ST	-CS11	refer to **	-FP / -FS
Available for	all sizes	wheel Ø 160+200 mm	for wheel Ø refer to **	upon request

\*\* RI-03.01 available for wheel Ø 100 - 125 mm, RI-05.03 available for wheel Ø 150 - 200 mm (only for swivel castors without brake)

\*\*\* Synthetic foot guard (-FP) for wheel Ø 125 mm

Series: LK-ALB, BK-ALB, BH-ALB

## Pressed steel castors, medium heavy duty brackets, with top plate fitting, wheel with Blickle Besthane® polyurethane tread

 350 - 600 kg

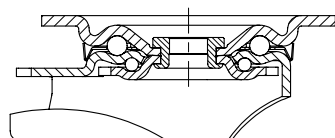
 RoHS



**Brackets:** LK/BK/BH series - Made of heavy pressed steel, swivel bracket with double ball bearing in the swivel head, strong central kingpin (wheel Ø 150 - 200 mm), swivel head seals. The special Blickle dynamic riveting process of the swivel head results in minimal swivel head play and smooth rolling characteristics with an increased service life achieved by the work hardening of the ball race grooves. Bolted wheel axle. Zinc-plated, blue-passivated, Cr6-free.

**Wheels:** ALB series - Tread: Made of high-quality polyurethane-elastomer Blickle Besthane®, 92° shore A, **high dynamic load capacity**, brown, non-marking, non-staining.

Wheel centre: Made of die-cast aluminium. Bearing type: Two pressed-in ball bearings.



Swivel castors	Fixed castors	Swivel castors with 'stop-fix' brake	Wheel Ø [mm]	Wheel width [mm]	Load capacity [kg]	Bearing type	Total height [mm]	Plate size [mm]	Bolt hole spacing [mm]	Bolt hole Ø [mm]	Offset swivel castor [mm]
LK-ALB 101K-1	BK-ALB 101K-1	LK-ALB 101K-1-FI	100	40	350	Ball bearing	130	100 x 85	80 x 60	9	45
LK-ALB 101K-3	BK-ALB 101K-3	LK-ALB 101K-3-FI	100	40	350	Ball bearing	130	140 x 110	105 x 75-80	11	45
LK-ALB 125K-1	BK-ALB 125K-1	LK-ALB 125K-1-FI	125	40	350	Ball bearing	155	100 x 85	80 x 60	9	48
LK-ALB 125K-3	BK-ALB 125K-3	LK-ALB 125K-3-FI	125	40	350	Ball bearing	155	140 x 110	105 x 75-80	11	48
LK-ALB 150K	BH-ALB 150K	LK-ALB 150K-FI	150	50	500	Ball bearing	197	140 x 110	105 x 75-80	11	63
LK-ALB 160K	BH-ALB 160K	LK-ALB 160K-FI	160	50	550	Ball bearing	202	140 x 110	105 x 75-80	11	63
LK-ALB 200K	BH-ALB 200K	LK-ALB 200K-FI	200	50	600	Ball bearing	245	140 x 110	105 x 75-80	11	65

More wheel options in the Blickle general catalogue G15!

### Options



	With 'stop-top' brake	With central braking system 'central-stop'	With 'ideal-stop' brake ttl. height +17mm *	Directional lock (retro fit) 1 x 360°	With steel foot guard
Product code suffix	-ST	-CS11	-IS	refer to **	-FS
Available for	all sizes	wheel Ø 100-125 mm	Ø 100, 125, 160, 200 with plate 140x110	for wheel Ø refer to **	upon request

\* Matching synthetic adapter plate for total height compensation for swivel and fixed castors without 'ideal-stop' brake: **Product code AP3**

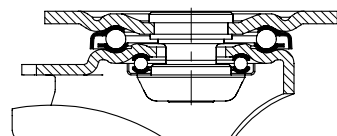
\*\* **RI-05.01** available for wheel Ø 100 - 125 mm with plate 100x85 mm, **RI-03.03** available for wheel Ø 100 - 125 mm with plate 140x110 mm, **RI-05.03** available for wheel Ø 150 - 200 mm (only for swivel castors without brake)

Series: LH-ALB, BH-ALB

**Pressed steel castors, heavy duty brackets, with top plate fitting, wheel with Blickle Besthane® polyurethane tread**

 350 - 900 kg

 RoHS



**Brackets:** LH/BH series - Made of heavy pressed steel, swivel bracket with heavy fork and top plate, very strong bolted and secured central kingpin, double ball bearing in the swivel head, additionally reinforced by the integration of **four specially shaped and hardened bearing seats** resulting in a very high resistance to shock and impact loads.

Bolted wheel axle.

Zinc-plated, blue-passivated, Cr6-free.

**Wheels:** ALB series - Tread: Made of high-quality polyurethane-elastomer Blickle Besthane®, 92° shore A, **high dynamic load capacity**, brown, non-marking, non-staining.

Wheel centre: Made of die-cast aluminium.

Bearing type: Two pressed-in ball bearings.



Swivel castors	Fixed castors	Swivel castors with 'stop-fix' brake	Wheel Ø [mm]	Wheel width [mm]	Load capacity [kg]	Bearing type	Total height [mm]	Plate size [mm]	Bolt hole spacing [mm]	Bolt hole Ø [mm]	Offset swivel castor [mm]
LH-ALB 101K-1	BH-ALB 101K-1	LH-ALB 101K-1-FI	100	40	350	Ball bearing	140	100 x 85	80 x 60	9	45
LH-ALB 101K-3	BH-ALB 101K-3	LH-ALB 101K-3-FI	100	40	350	Ball bearing	140	140 x 110	105 x 75-80	11	45
LH-ALB 125K-1	BH-ALB 125K-1	LH-ALB 125K-1-FI	125	40	350	Ball bearing	165	100 x 85	80 x 60	9	45
LH-ALB 125K-3	BH-ALB 125K-3	LH-ALB 125K-3-FI	125	40	350	Ball bearing	165	140 x 110	105 x 75-80	11	45
LH-ALB 150K	BH-ALB 150K	LH-ALB 150K-FI	150	50	500	Ball bearing	197	140 x 110	105 x 75-80	11	65
LH-ALB 160K	BH-ALB 160K	LH-ALB 160K-FI	160	50	550	Ball bearing	202	140 x 110	105 x 75-80	11	65
LH-ALB 200K	BH-ALB 200K	LH-ALB 200K-FI	200	50	800	Ball bearing	245	140 x 110	105 x 75-80	11	70
LH-ALB 250K	BH-ALB 250K	*	250	60	900	Ball bearing	295	140 x 110	105 x 75-80	11	82

\* For the 'stop-top' brake version refer to 'Options'

#### Options



	With 'stop-top' brake	With central braking system 'central-stop'	With 'ideal-stop' brake ttl. height +17mm **	Directional lock (retro-fit) 1 x 360°	With steel foot guard	Truck lock
Artikel-Nr.-Zusatz	-ST	-CS13	-IS	refer to ***	-FS	FF 125/150/160/200
Lieferbar für	all sizes	wheel Ø 160 - 250 mm	wheel Ø 160 - 250 mm	for wheel Ø and plate dimensions refer to ***	upon request	wheel Ø 125, 150, 160, 200 mm

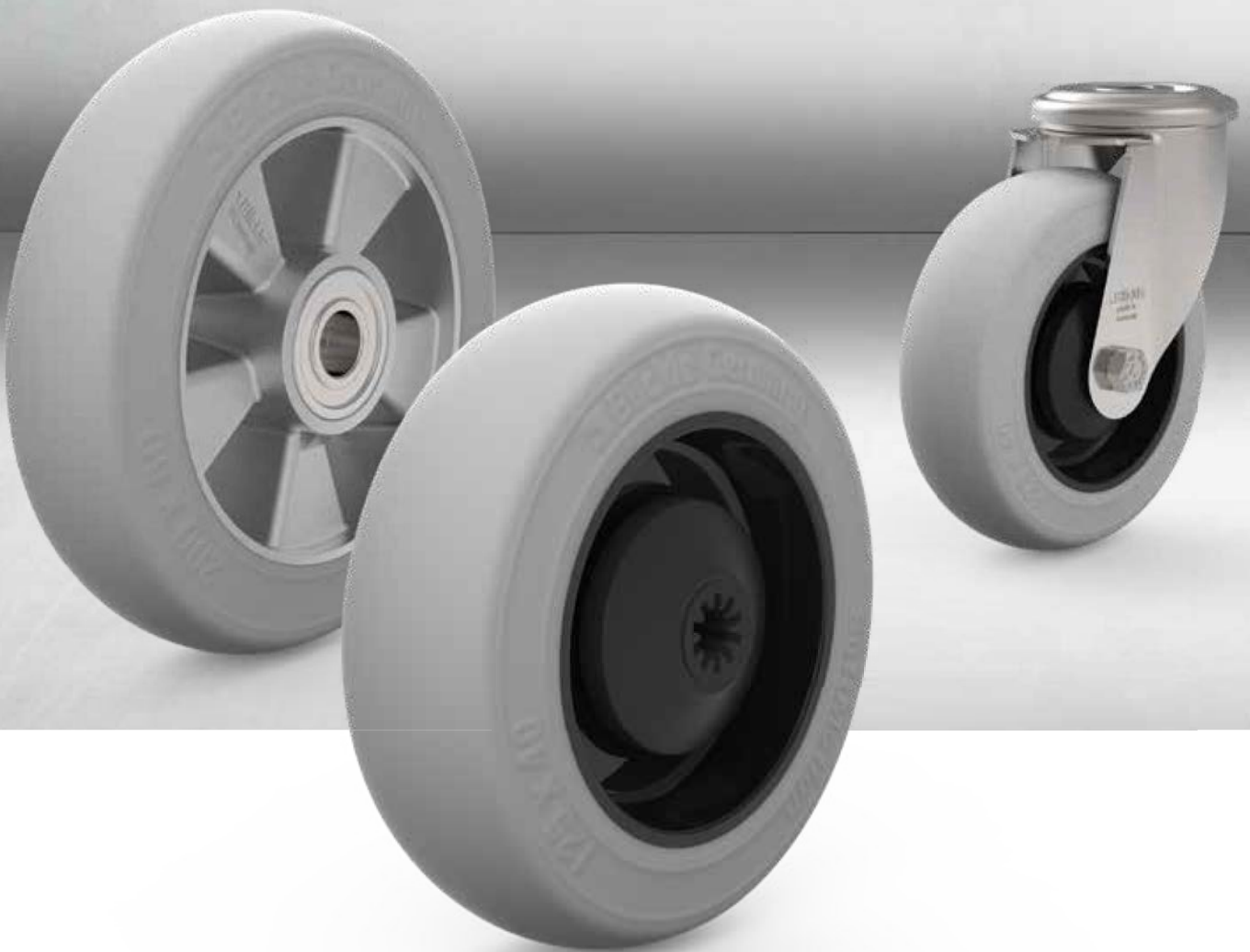
\*\* Matching synthetic adapter plate for total height compensation for swivel and fixed castors without 'ideal-stop' brake: **Product code AP3**

\*\*\* **RI-04.01** available for wheel Ø 100 - 125 mm with plate 100x85 mm, **RI-04.03** available for wheel Ø 100 - 125 mm with plate 140x110 mm, **RI-05.03** available for wheel Ø 150 - 200 mm (only for swivel castors without brake)



Good damping and maximum operational comfort.

## **Blickle SoftMotion. Soft rubber wheels and castors.**



5

Perfect for shock-sensitive components and goods:

## POES / ALES Blickle series.



### For even greater operating comfort: The new Blickle SoftMotion soft rubber series.

**The new Blickle SoftMotion soft rubber series offers the optimal solution for all applications where maximum operational comfort, excellent damping of the transported goods and significant noise reduction are vitally important.**

5

Rolling becomes a gentle glide with the new soft rubber wheels that feature a special tread made of high-quality elastic solid rubber.


The tyre is permanently vulcanised onto the polyamide (POES series) or the aluminium wheel centre (ALES series). This makes the wheels very suitable for applications with lateral loads.

The thick tread cushion, with its specially adapted tread profile also provides a quiet operation. The tread in 55° Shore A is characterised by high elasticity and low rolling resistance thanks to the use of a high-quality rubber compound.

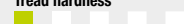


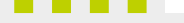

From service trolleys to the transport of shock-sensitive components – the new Blickle SoftMotion soft rubber series provides a new operating experience.

Series: POES, ALES

## Wheels with soft rubber "Blickle SoftMotion" tyres featuring polyamide or aluminium wheel centres

 120 – 350 kg

 RoHS

<b>Tread hardness</b>		55° Shore A
<b>Heat resistance</b>		-25° C - +80° C up to +100° C for short periods
<b>Rolling resistance</b>		Excellent
<b>Operating noise</b>		Outstanding
<b>Floor surface preservation</b>		Outstanding

### POES/ALES Wheels Series

**Tyres:** Made of "Blickle SoftMotion" high-quality elastic soft rubber, hardness 55° Shore A, maximum operational comfort, particularly low-noise operation, low rolling resistance, extremely good floor preservation, color non-marking grey, vulcanised onto the wheel centre.

**Wheel centre:** POES Series: Made of high-quality, impact-resistant black polyamide 6.

ALES Series: Made of die-cast aluminium.

#### Bearing types:

- Ball bearing (C): Centrally over-moulded, sealed ball bearing lubricated with long-life grease.
- Ball bearing: Two pressed-in ball bearings, greased with long-life grease.

#### Other characteristics:

High chemical resistance to many aggressive substances, except oils (G15 Catalogue, Table on page 36-37).

Temperature resistance: -25° C to +80° C, up to +100° C for short periods.

At ambient temperatures above +35 °C the load capacity is reduced.

Maintenance-free under normal conditions.

### Options



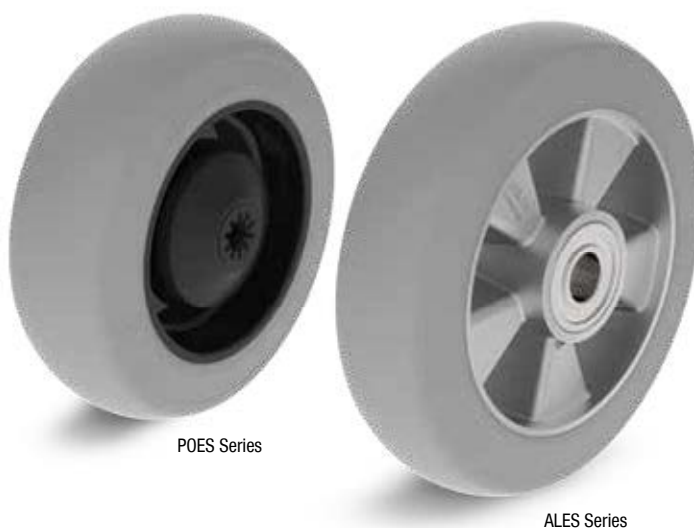
Wheel with additional ball bearing seal

#### Product code suffix

**-KD**

Available for

Wheel Ø 100-125 mm on request



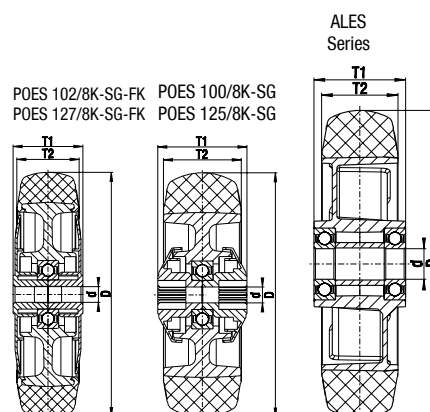
POES Series

ALES Series




Wheels	Wheel Ø (D) [mm]	Wheel width (T2) [mm]	Load capacity [kg]	Bearing type	Axle hole Ø (d) [mm]	Hub length (T1) [mm]
<b>POES 102/8K-SG-FK *</b>	100	32	120	Ball bearing (C)	8	36
<b>POES 100/8K-SG</b>	100	40	150	Ball bearing (C)	8	46
<b>POES 127/8K-SG-FK*</b>	125	32	150	Ball bearing (C)	8	36
<b>POES 125/8K-SG</b>	125	40	175	Ball bearing (C)	8	46
<b>ALES 150/20K-SG</b>	150	50	280	Ball bearing	20	60
<b>ALES 160/20K-SG</b>	160	50	300	Ball bearing	20	60
<b>ALES 200/20K-SG</b>	200	50	350	Ball bearing	20	60

\*Suitable for light-duty castors

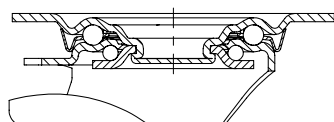


Series: LE-POES, B-POES, LE-ALES, B-ALES

## Pressed steel castors with top plate fitting and wheel with "Blickle SoftMotion" soft rubber tyres

 150 – 300 kg

 RoHS



**Brackets:** LE/B series – Made of pressed steel, steering bracket with double ball bearing in the swivel head, swivel head seals. The special Blickle dynamic riveting process for the swivel head results in minimal swivel head play and smooth rolling characteristics with increased service life achieved by work hardening the ball race grooves.  
Bolted wheel axle.  
Zinc-plated, blue-passivated, Cr6-free.

**Wheels:** POES/ALES Series tyres: Made of "Blickle Soft-Motion" high-quality elastic solid rubber, 55° shore A, grey, non-marking.  
Wheel centre: POES Series: Made of high-quality, impact-resistant black polyamide 6.  
ALES Series: Made of die-cast aluminium.  
Bearing types: A central over-moulded ball bearing (C) or two pressed-in ball bearings.



Swivel castors	Fixed castors	Swivel castors with 'stop-fix' brake	Wheel Ø [mm]	Tyre width [mm]	Load capacity [kg]	Bearing type	Total height [mm]	Plate size [mm]	Bolt hole spacing [mm]	Bolt hole Ø [mm]	Offset swivel castor [mm]
LE-POES 100K-SG	B-POES 100K-SG	LE-POES 100K-FI-SG	100	40	150	Ball bearing (C)	125	100 x 85	80 x 60	9	36
LE-POES 125K-SG	B-POES 125K-SG	LE-POES 125K-FI-SG	125	40	150	Ball bearing (C)	150	100 x 85	80 x 60	9	40
LE-ALES 150K-SG	B-ALES 150K-SG	LE-ALES 150K-FI-SG	150	50	280	Ball bearing	190	140 x 110	105 x 75-80	11	54
LE-ALES 160K-SG	B-ALES 160K-SG	LE-ALES 160K-FI-SG	160	50	300	Ball bearing	195	140 x 110	105 x 75-80	11	54
LE-ALES 200K-SG	B-ALES 200K-SG	LE-ALES 200K-FI-SG	200	50	300	Ball bearing	235	140 x 110	105 x 75-80	11	54

5

### Options



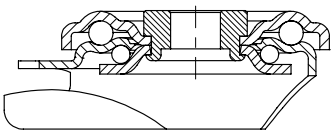
	Illustration POES series	With locking 'stop-top' brake	With central brake system Central braking	Light-duty swivel castor with top plate fitting	Light-duty fixed castor with top plate fitting	Light-duty swivel cas- tors with top plate fitting and 'stop-fix' brake
Product code suffix		-ST	-CS11	LKPA-POES 102K-SG-FK LKPA-POES 127K-SG-FK	BKPA-POES 102K-SG-FK BKPA-POES 127K-SG-FK	LKPA-POES 102K-FI-SG-FK LKPA-POES 127K-FI-SG-FK
Available for		Wheel Ø 150-200 mm	Wheel Ø 160-200 mm	Wheel Ø 100-125 mm	Wheel Ø 100-125 mm	Wheel Ø 100-125 mm



Series: LER-POES

**Pressed steel castors with bolt hole,  
wheel with "Blickle SoftMotion"  
soft rubber tyres**

 150 kg  RoHS



**Brackets:** LER series – Made of pressed steel, with double ball bearing in the swivel head, strong central kingpin, ball protection by the special top plate and ball disc design. The special Blickle dynamic riveting process for the swivel head results in minimal swivel head play and smooth rolling characteristics with increased service life achieved by work hardening the ball race grooves. Bolted wheel axle. Zinc-plated, blue-passivated, Cr6-free.

**Wheels:** POES series – Tyres: Made of "Blickle SoftMotion" high-quality elastic solid rubber, 55° shore A, grey, non-marking. Wheel centre: Made of high-quality, impact-resistant black polyamide 6. Bearing type: Centrally over-moulded ball bearing (C).



Swivel castors	Swivel castors with 'stop-fix' brake	Wheel Ø [mm]	Tyre width [mm]	Load capacity [kg]	Bearing type	Total height [mm]	Plates Ø [mm]	Bolt hole Ø [mm]	Offset [mm]
LER-POES 100K-SG	LER-POES 100K-FI-SG	100	40	150	Ball bearing (C)	125	70	13	36
LER-POES 125K-SG	LER-POES 125K-FI-SG	125	40	150	Ball bearing (C)	150	70	13	40

**Options**



	Light duty swivel castor with bolt hole	Light-duty fixed castor with bolt hole	Light-duty swivel castors with bolt hole and 'stop-fix' brake
Product code suffix	LKRA-POES 102K-SG-FK LKRA-POES 127K-SG-FK	BKRA-POES 102K-SG-FK BKRA-POES 127K-SG-FK	LKRA-POES 102K-FI-SG-FK LKRA-POES 127K-FI-SG-FK
Available for	All sizes	All sizes	All sizes



Also innovative on the world wide web.

## We make the digital world mobile.

**An innovative company does not restrict itself simply to product developments. On the Blicke website, visitors can experience the unique "product finder", which leads customers directly to the ideal product in three simple steps.**

There is no long searching and clicking on the Blicke website. Users can find their products in just three clicks – it doesn't get any easier than that. The Blicke website is informative and clearly structured, and potential customers have access to the latest information and interesting additional information on Blicke's own corporate Facebook page.



**The world is constantly on the move. Come along with us!**

Growth in the Blickle POEV product family.

## The all-rounder with elastic solid rubber tyres



The benefits of greater product diversity.

## New wheel dimensions and even more applications: the POEV series.



### Additions to the POEV product family – New wheel sizes for an even broader range.

**Wheels from the POEV series are all-rounders with a very good price-performance ratio for almost all applications and industries. They consist of a nylon wheel centre combined with vulcanised elastic solid rubber tyres.**

In comparison with wheels with standard solid rubber treads, the high-quality elastic solid rubber offers smooth rolling quality, higher load capacities and significantly lower rolling resistances.

This makes the POEV series interesting as an all-purpose solution for many applications.


Especially in the area of the 100 and 125 mm wheel diameters, the POEV series now features additional wheel versions with an even more interesting price / performance ratio. Compared with the standard versions, a more compact, optimised design has been achieved, which offers the same performance as the standard wheels from the G15 catalogue.










Series: POEV...-SB, POEV...-SG

## Heavy-duty wheels with elastic solid rubber "Blickle EasyRoll" tyres with polyamide wheel centre

 150 – 250 kg

✓RoHS



<b>Tread hardness</b>		65° Shore A
<b>Heat resistance</b>		-25° C - +80° C up to +100° C for short periods
<b>Rolling resistance</b>		Excellent
<b>Operating noise</b>		Excellent
<b>Floor surface preservation</b>		Excellent

**Blickle**  
**EasyRoll**

### POEV wheel series:

**Tyres:** Made of high-quality elastic solid rubber in "Blickle EasyRoll", 65° Shore A hardness, extremely high degree of operational comfort, low-noise rolling, minimal rolling resistance, extremely good floor protection, non-marking blue (-SB) or non-marking grey (-SG) vulcanised onto the wheel centre.

**Wheel centre:** Made of high-quality, impact-resistant black polyamide 6.

### Bearing type:

- Ball bearing (C): Centrally encapsulated, sealed ball bearing lubricated with long-life grease.

### Other characteristics:

High chemical resistance to many aggressive substances, except oils (G15 catalogue, Table on page 36-37).

Temperature resistance: -25° C to +80° C, up to +100° C for short periods.

At ambient temperatures above +35 °C the load capacity is reduced.

Maintenance-free under normal conditions.

Wheels	Wheel Ø	Wheel width	Load capacity [kg]	Bearing type	Axle hole Ø	Hub length
	(D) [mm]	(T2) [mm]			(d) [mm]	(T1) [mm]
<b>POEV 102/8-36K-SB</b>	100	32	200	Ball bearing (C)	8	36
<b>POEV 102/8K-SB</b>	100	32	200	Ball bearing (C)	8	46
<b>POEV 102/8-36K-SG</b>	100	32	200	Ball bearing (C)	8	36
<b>POEV 102/8K-SG</b>	100	32	200	Ball bearing (C)	8	46
<b>POEV 127/8K-SG-01</b>	125	31	150	Ball bearing (C)	8	36
<b>POEV 126/8K-SB-01</b>	125	37	250	Ball bearing (C)	8	46
<b>POEV 126/10K-SB-01</b>	125	37	250	Ball bearing (C)	10	46
<b>POEV 126/8K-SG-01</b>	125	37	250	Ball bearing (C)	8	46
<b>POEV 126/10K-SG-01</b>	125	37	250	Ball bearing (C)	10	46

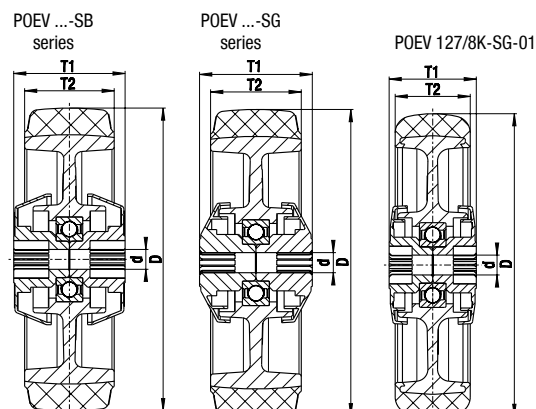
For additional wheelØ, see catalogue G15 page 164

For other variants, please refer to the full Blickle G15 catalogue!

### Options



	in an electrically conductive version, black tyre	Wheel with additional ball bearing seal
<b>Product code suffix</b>	<b>-EL</b>	<b>-KD</b>
Available for	On request	On request



Series: LE-POEV, B-POEV

## Pressed steel castors with top plate fitting Wheel with elastic solid rubber tyres "Blickle EasyRoll"

 150 kg

 RoHS



**Blickle  
EasyRoll**

**Brackets:** LE/B series – Made of pressed steel, steering bracket with double ball bearing in the swivel head, swivel head seals. The special Blickle dynamic riveting process for the swivel head results in minimal swivel head play and smooth rolling characteristics with increased service life achieved by work hardening the ball race grooves.

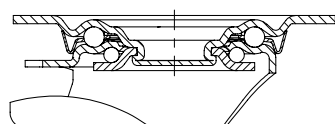
Bolted wheel axle.

Zinc-plated, blue-passivated, Cr6-free.

**Wheels:** POEV series - Tyres: Made of 'Blickle EasyRoll' high-quality elastic solid rubber in smooth-rolling quality, 65° Shore A, non-marking blue (-SB) or non-marking grey (-SG).

Wheel centre: Made of high-quality, impact-resistant black polyamide 6.

Bearing type: A centrally over-moulded ball bearing (C).



Swivel castors	Fixed castors	Swivel castors with 'stop-fix' brake	Wheel Ø [mm]	Tyre width [mm]	Load capacity [kg]	Bearing type	Total height [mm]	Plate size [mm]	Bolt hole spacing [mm]	Bolt hole Ø [mm]	Offset swivel castor [mm]
LE-POEV 102K-SB	B-POEV 102K-SB	LE-POEV 102K-FI-SB	100	32	150	Ball bearing (C)	125	100 x 85	80 x 60	9	36
LE-POEV 102K-SG	B-POEV 102K-SG	LE-POEV 102K-FI-SG	100	32	150	Ball bearing (C)	125	100 x 85	80 x 60	9	36
LE-POEV 126K-SB	B-POEV 126K-SB	LE-POEV 126K-FI-SB	125	37	150	Ball bearing (C)	150	100 x 85	80 x 60	9	40
LE-POEV 126K-SG	B-POEV 126K-SG	LE-POEV 126K-FI-SG	125	37	150	Ball bearing (C)	150	100 x 85	80 x 60	9	40

6

For other wheel variants, please refer to the full Blickle G15 catalogue!

Variants / Options



	Illustrated with non-marking grey tyre	in an electrically conductive version, black tyre	Directional lock (retro-fit) 1 x 360°*	With synthetic foot guard	Light-duty castor with top plate fitting
Product code suffix		-EL	RI-03.01	-FP	
Available for		On request	All sizes	wheel Ø 125 mm On request	On request

\* only for swivel casters that do not have a lock

Series: LER-POEV

**Pressed steel castors with bolt hole**  
**Wheel with “Blickle EasyRoll” elastic**  
**solid rubber tyres**

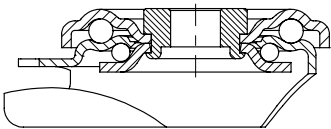
 150 kg       RoHS



**Blickle**  
**EasyRoll**

**Brackets:** LER series – Made of pressed steel, with double ball bearing in the swivel head, strong central kingpin, ball protection by the special top plate and ball disc design. The special Blickle dynamic riveting process for the swivel head results in minimal swivel head play and smooth rolling characteristics with increased service life achieved by work hardening the ball race grooves. Bolted wheel axle. Zinc-plated, blue-passivated, Cr6-free.

**Wheels:** POEV series - Tyres: Made of ‘Blickle EasyRoll’ high-quality elastic solid rubber in smooth-rolling quality, 65° Shore A, non-marking blue (-SB) or non-marking grey (-SG). Wheel centre: Made of high-quality, impact-resistant black polyamide 6. Bearing type: Centrally over-moulded ball bearing (C).



Swivel castors	Swivel castors with ‘stop-fix’ brake	Wheel Ø [mm]	Tyre width [mm]	Load capacity [kg]	Bearing type	Total height [mm]	Plates Ø [mm]	Bolt hole Ø [mm]	Offset [mm]
LER-POEV 102K-SB	LER-POEV 102K-FI-SB	100	32	150	Ball bearing (C)	125	70	13	36
LER-POEV 102K-SG	LER-POEV 102K-FI-SG	100	32	150	Ball bearing (C)	125	70	13	36
LER-POEV 126K-SB	LER-POEV 126K-FI-SB	125	37	150	Ball bearing (C)	150	70	13	40
LER-POEV 126K-SG	LER-POEV 126K-FI-SG	125	37	150	Ball bearing (C)	150	70	13	40

For other variants, please refer to the full Blickle G15 catalogue!

Options



	Illustrated with non-marking grey tyre	in an electrically conductive version, black tyre	With synthetic foot guard	Light-duty castor with bolt hole
Product code suffix		-EL	-FP	
Available for		On request	Wheel Ø 125 mm on request	On request

MORE THAN 30,000 PRODUCTS – VARIED APPLICATIONS.



The right wheel, the right castor for every application

## We make things mobile. Everything. Everywhere.

**Blickle gets the world moving: Wherever, whenever something needs to be moved, you will find Blickle wheels and castors.**

Blickle wheels and castors help to move objects safely and economically in countless and varied applications. Our products transport goods using intra-logistics for even the heaviest loads in order to get them there safely from A to B. In mechanical engineering, we can make all kinds of machines mobile. Our products meet all the specific hygienic requirements for food production or in hospital environments. We also welcome the very individual requirements involved in plant engineering.

We continually adapt our product portfolio to meet the needs of every application, from developing new materials, to optimising proven products, and introducing pioneering technologies. Our standard range of more than 30,000 products covers nearly all applications. And for even more specific requirements, our specialist consultants and engineers develop bespoke solutions that can be customised to your requirements.



Optimal for food production and hygiene applications

## The POBS wheel series. Clean work is an absolute necessity.



A clean solution, even in humid environments.

## The POBS wheel series. Good floor preservation and a high degree of operational comfort.



### The optimal solution for food production and all hygiene applications: The POBS wheel series from Blicke.

The Blicke POBS series has already been proven in many customer projects and is now included in the standard range to combine high load capacities with very low rolling resistance, a high degree of operational comfort and good floor preservation, even in hygienically sensitive areas.

Whereas wheels and castors with polyurethane treads have already achieved a leading position in the traditional industrial sector because they combine high load capacity, a high level of floor surface preservation and low rolling resistance, the frequently humid environments in the food and hygiene sector often make hard plastic wheels the preferred option. The Blicke POBS series now offers the comfort and convenience of polyurethane treads. A particularly thick tread cushion made of the soft, reaction-cast

premium Blicke Besthane® Soft polyurethane which is moulded onto a polyamide wheel centre, makes it ideal for use even in humid environments.

In contrast to conventional wheels with polyurethane treads, these wheels are completely hydrolysis and corrosion resistant. Another plus is their high chemical resistance to many aggressive substances.

Series: POBS

## Heavy-duty wheels with Blickle Besthane® Soft polyurethane tread, with polyamide wheel centres

140 – 500 kg

✓RoHS

<b>Tread hardness</b>	<div><div></div><div></div><div></div><div></div><div></div><div></div><div></div><div></div><div></div><div></div></div>	75° Shore A
<b>Heat resistance</b>	<div><div></div><div></div><div></div><div></div><div></div><div></div><div></div><div></div><div></div><div></div></div>	-25° C - +70° C up to +90° C for short periods
<b>Rolling resistance</b>	<div><div></div><div></div><div></div><div></div><div></div><div></div><div></div><div></div><div></div><div></div></div>	Outstanding
<b>Operating noise</b>	<div><div></div><div></div><div></div><div></div><div></div><div></div><div></div><div></div><div></div><div></div></div>	Excellent
<b>Floor surface preservation</b>	<div><div></div><div></div><div></div><div></div><div></div><div></div><div></div><div></div><div></div><div></div></div>	Excellent

 Blickle  
Besthane® Soft

### POBS wheel series:

**Tread:** Made of high-quality, reaction-injected Blickle Besthane® Soft polyurethane-elastomer, 75° hardness, Shore A, very high operational comfort due to the especially thick, elastic tread, low-noise operation, **very low rolling resistance**, **high dynamic load capacity**, good floor preservation, highly abrasion-resistant, high cut and tear propagation resistance, blue, non-marking, non-staining, very good chemical bonding with the wheel centre.

**Wheel centre:** Made of high-quality, impact-resistant black polyamide 6.

### Bearing types:

- Ball bearing (C): Centrally over-moulded, sealed stainless steel ball bearing lubricated with long-life grease.
- Ball bearings (CC): Two centrally over-moulded, sealed ball bearings lubricated with long-life grease.

### Other characteristics:

#### Corrosion- and hydrolysis resistant.

High chemical resistance to many aggressive substances (G15 catalogue, Table page 36-37). Temperature resistance: -25° C to +70° C, up to +90° C for short periods.

The load capacity reduces at ambient temperatures above +40° C.

Maintenance-free under normal conditions.



Wheels	Wheel Ø (D) [mm]	Wheel width (T2) [mm]	Load capacity [kg]	Bearing type	Axle hole Ø (d) [mm]	Hub length (T1) [mm]
POBS 80/8XKA	80	30	140	Ball bearing (C)	8	36
POBS 100x38/8XKA	100	38	200	Ball bearing (C)	8	46
POBS 100x38/10XKA	100	38	200	Ball bearing (C)	10	46
POBS 125/8XKA	125	40	250	Ball bearing (C)	8	46
POBS 125/10XKA	125	40	250	Ball bearing (C)	10	46
POBS 160/12XKA	160	50	400	Ball bearings (CC)	12	60
POBS 200/12XKA	200	50	500	Ball bearings (CC)	12	60

### Options



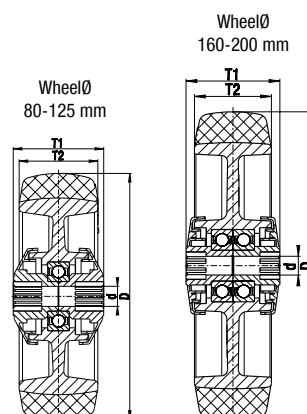
Wheel with additional ball bearing seal

Product code suffix

-XKD


Available for

On request

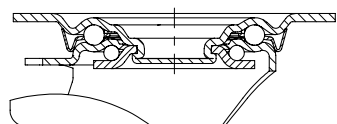


Series: LEX-POBS, BX-POBS

## Stainless steel castors with top plate fitting, wheel with Blickle Besthane® Soft polyurethane tread

 140 – 300 kg

✓RoHS



 Blickle  
Besthane® Soft

**Brackets:** LEX/BX series – Made of high-quality, corrosion resistant chromium-nickel stainless steel (Material No. 1.4301/AISI 304), swivel bracket with double ball bearing in the swivel head, swivel head seals. The special Blickle dynamic riveting process for the swivel head results in minimal swivel head play and smooth rolling characteristics with increased service life achieved by work hardening the ball race grooves.

All parts including axle material are corrosion-resistant. Bolted wheel axle. Surface vibration-ground finished.

**Wheels:** POBS series – tread: Made of Blickle Besthane® Soft high-quality polyurethane-elastomer, 75° Shore A, **very low rolling resistance, high dynamic load capacity, hydrolysis resistant**, blue, non-marking, non-staining. Wheel centre: Made of high-quality, impact-resistant nylon 6, black.

Bearing types: A centrally over-moulded, stainless steel ball bearing (C) or two centrally over-moulded, stainless steel ball bearings (CC).



Swivel castors	Fixed castors	Swivel castors with 'stop-fix' brake	Wheel Ø [mm]	Tyre width [mm]	Load capacity [kg]	Bearing type	Total height [mm]	Plate size [mm]	Bolt hole spacing [mm]	Bolt hole Ø [mm]	Offset swivel castor [mm]
LEX-POBS 80XKA	BX-POBS 80XKA	LEX-POBS 80XKA-FI	80	30	140	Ball bearing (C)	102	100 x 85	80 x 60	9	38
LEX-POBS 100XKA	BX-POBS 100XKA	LEX-POBS 100XKA-FI	100	38	150	Ball bearing (C)	125	100 x 85	80 x 60	9	36
LEX-POBS 125XKA	BX-POBS 125XKA	LEX-POBS 125XKA-FI	125	40	150	Ball bearing (C)	150	100 x 85	80 x 60	9	40
LEX-POBS 160XKA	BX-POBS 160XKA	LEX-POBS 160XKA-FI	160	50	300	Ball bearings (CC)	195	140 x 110	105 x 75-80	11	54
LEX-POBS 200XKA	BX-POBS 200XKA	LEX-POBS 200XKA-FI	200	50	300	Ball bearings (CC)	235	140 x 110	105 x 75-80	11	54

7

### Options



With 'ideal-stop' brake \*

Product code suffix

-IS

Available for


Wheel Ø 160-200 mm

\*Without altering the total height

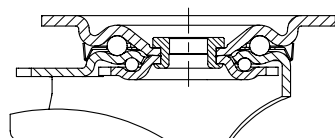


Series: LKX-POBS, BKX-POBS

## Stainless steel, heavy-duty castors with top plate fitting, wheel with Blickle Besthane® Soft polyurethane tread

 200 – 500 kg

 RoHS



 Blickle  
Besthane® Soft

**Brackets:** LKX/BKX series – Made of high-quality, heavy-duty, corrosion-resistant chromium-nickel stainless steel (Material No. 1.4301/AISI 304).

Made of pressed steel, swivel bracket with double ball bearing in the swivel head, strong central kingpin (wheel Ø 160-200 mm), swivel head seals. The special Blickle dynamic riveting process for the swivel head results in minimal swivel head play and smooth rolling characteristics with increased service life achieved by work hardening the ball race grooves.

All parts including axle material are corrosion-resistant.

Bolted wheel axle.

Surface vibration-ground finished.

**Wheels:** POBS series – tread: Made of Blickle Besthane® Soft high-quality polyurethane-elastomer, 75° Shore A, **very low rolling resistance, high dynamic load capacity, hydrolysis resistant**, blue, non-marking, non-staining.

Wheel centre: Made of high-quality, impact-resistant black polyamide 6.

Bearing types: Centrally over-moulded, stainless steel ball bearing (C) or two centrally over-moulded, stainless steel ball bearings (CC).



Swivel castors	Fixed castors	Swivel castors with 'stop-fix' brake	Wheel Ø [mm]	Tyre width [mm]	Load capacity [kg]	Bearing type	Total height [mm]	Plate size [mm]	Bolt hole spacing [mm]	Bolt hole Ø [mm]	Offset swivel castor [mm]
LKX-POBS 100XKA-1	BKX-POBS 100XKA-1	LKX-POBS 100XKA-1-FI	100	38	200	Ball bearing (C)	130	100 x 85	80 x 60	9	45
LKX-POBS 125XKA-1	BKX-POBS 125XKA-1	LKX-POBS 125XKA-1-FI	125	40	250	Ball bearing (C)	155	100 x 85	80 x 60	9	48
LKX-POBS 125XKA-3	BKX-POBS 125XKA-3	LKX-POBS 125XKA-3-FI	125	40	250	Ball bearing (C)	155	140 x 110	105 x 75-80	11	48
LKX-POBS 160XKA	BKX-POBS 160XKA	LKX-POBS 160XKA-FI	160	50	400	Ball bearings (CC)	202	140 x 110	105 x 75-80	11	63
LKX-POBS 200XKA	BKX-POBS 200XKA	LKX-POBS 200XKA-FI	200	50	500	Ball bearings (CC)	245	140 x 110	105 x 75-80	11	65

### Options



With 'stop-top' brake

Product code suffix

-ST

Available for

Wheel Ø 160-200 mm

NEW AWARD.



Blickle as a model of entrepreneurial activity.

## Awarded the "World Market Leader Future Champion 2017"

**Who will become the world market leader? The B. Meier business school of the University of St. Gallen, in cooperation with the Academy of German World Market Leaders (ADWM) examined various companies in Germany, Austria and Switzerland.**

Basis: The world market leader index, which determines the winners according to transparent selection criteria. The award is given to companies that serve as a model for successful and

entrepreneurial activity in their sector. Such as Blickle. In the past year alone, Blickle easily met all these requirements without any problems.

Blickle regards the award not only as recognition for its previous performance, but also as an incentive to further improve its product quality, customer satisfaction and efficiency in order to earn the title "World Market Leader Champion" again.

Synthetic twin castors from Blickle.

# Blickle MOVE. Double the movement.



reddot award 2014  
winner



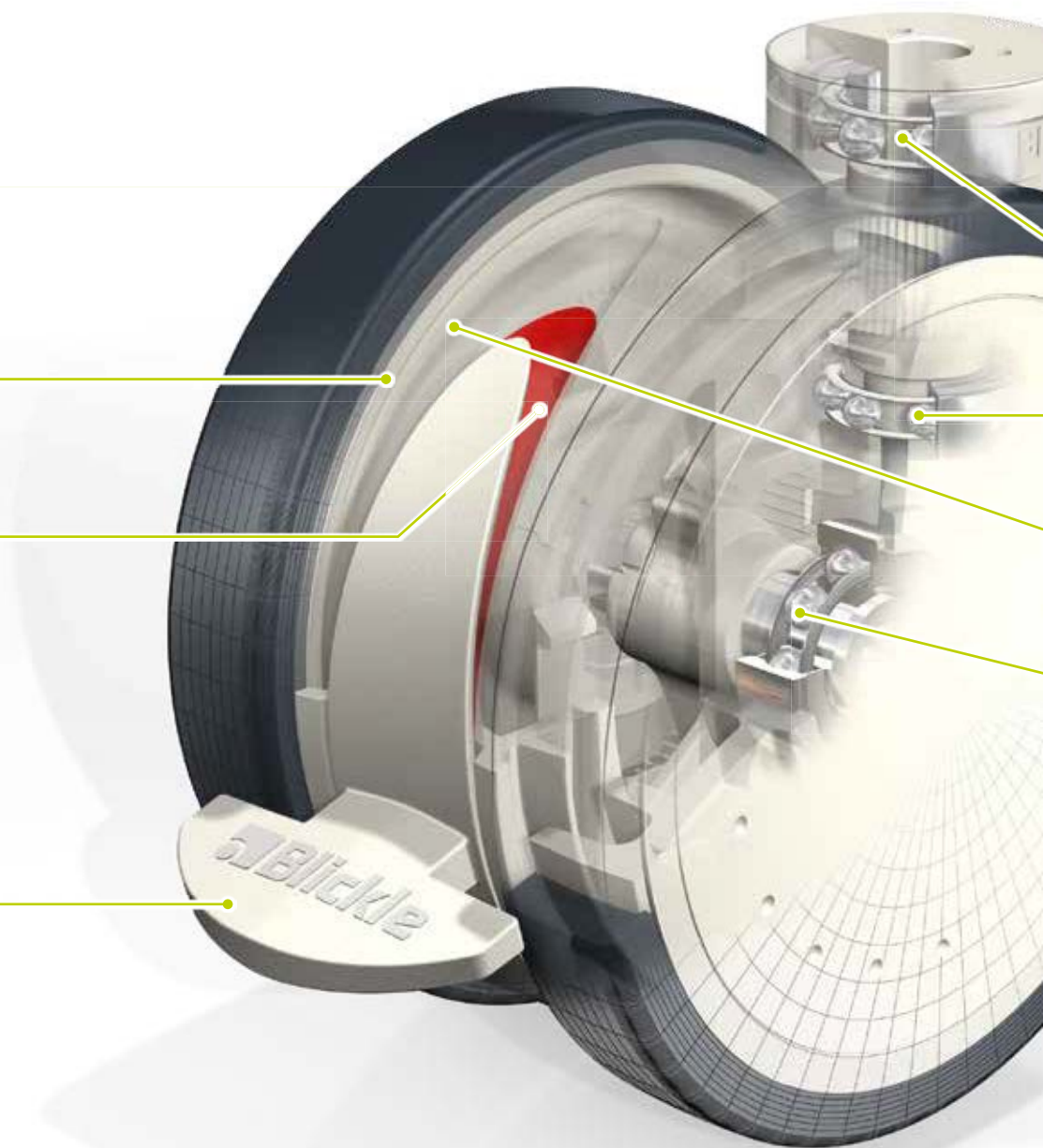
Focus Open 2014  
Special Mention

# MOVE

Wheel centre  
made of nylon

Colour coded lock  
position indicator  
optionally available

Ergonomic foot pedal  
for non-positive locking  
of the swivel head  
and the wheel



## High load capacity – no compromises.

**Our demands are very simple: To develop the best castor or wheel for every application. With our latest innovation, the Blicke MOVE synthetic twin castors, we once more exhibit our technological leadership.**

**We innovate mobility** – this is why the new Blicke MOVE synthetic twin castors offer our customers measurable advantages. Smoother running and manoeuvrability through high quality of treads. More design options due to the compact structural form. Perfect safety thanks to high-quality manufacturing and optionally available lock position indicator. Plus optimum hygiene due to the smooth surfaces and convenient cleaning options.

Despite their light weight, the Blicke MOVE twin castors offer increased mechanical stability. In short – they are attractive due to their modern design and are available in many colour variations. All of these characteristics virtually predestine Blicke MOVE twin castors for use in a variety of applications, whether medical equipment, transport systems, kitchen equipment or designer furniture. Anytime you want to move high loads without compromising anything!



# The components.



Two sealed precision ball bearings  
in the swivel head

Bracket made of reinforced  
nylon with a compact design

Double sealed precision ball  
bearing

Tread made of high-quality  
thermoplastic polyurethane (TPU)

## Reasons that get the added value rolling.

- **High load capacity and operational safety** – ideal dimension and design options
- **Maximum running comfort and best dynamic properties** – non-marking TPU tread
- **Low noise emission** – optimised design and use of high-quality materials
- **Compact structural form** – ideal ratio of overall height to wheel diameter
- **Use of reinforced nylon** – shape retention in hot and wet environments
- **Maximum stability with eco-friendly use of resources** – FEM calculations and 3D design
- **Perfect handling and assembly** – large variety of accessories and fittings available
- **Easy cleaning and washing machine suitability** – appropriate sealing, smooth surface structure with easy accessibility, corrosion-resistant version optionally available
- **Coloured marking of the brake lever position** – optionally available
- **Electrically conductive version according to DIN EN 12527** – optionally available

# MOVE. The options.

## Bracket and bearing.

The bracket was especially designed to meet higher demands on stability, impact resistance and service life. This is why high-quality reinforced nylon is used to fulfil these requirements and are resistant against most chemicals. When creating the dimensions of the range the Blickle engineers attained an optimum stress behaviour by means of FEM simulations, resulting in an environmentally-friendly use of high-quality materials.

Two sealed precision ball bearings in the swivel head ensure optimum swivelling properties and high operational safety even in rough operating conditions. High-quality ball bearings as wheel bearings with minimal bearing play enable absolutely quiet and smooth rolling as well as tracking stability.



## Wheels and tread.

The hardness, shape and material of the treads considerably influence the running comfort and smoothness as well as the starting, rolling and swivel resistance of a castor. To match diverse requirements, we offer the MOVE with the PATH, high-quality thermoplastic polyurethane wheel series as standard. The tread offers good floor preservation, low-noise operation, high abrasion resistance, non-marking, non-staining and very high chemical resistance to many aggressive substances.

TPU can be used in a temperature range from  $-20^{\circ}\text{C}$  to  $+60^{\circ}\text{C}$  and temporarily up to  $+90^{\circ}\text{C}$ . It is moulded onto the nylon wheel centre as a **tread with 94° Shore A hardness**.



## Optional lock position indicator.

Another unique selling point of the Blickle MOVE synthetic twin castors is the optionally available lock indicator. This displays the operating angle of the locking brake.



## Stainless steel version.

All castor variations are available as a stainless steel version. Metal parts such as ball bearings in the swivel head and in the wheels, plus the axles, are made of chromium-nickel steel and therefore protected from humidity and corrosion.



## Electrical conductivity.

Blickle MOVE castors are also available as an electrical conductive version with a leakage resistance of  $R < 10^4 \Omega$  according to DIN EN 12527. The electrical conductivity prevents the possibility of the handler receiving electric shocks.



## Colours.

As we are experts in synthetics technology and manufacture exclusively at our headquarters in Germany, we are also flexible when it comes to colour design and can comply with customer preferences. The basic variations are available in grey white RAL 9002 and silver grey RAL 7001.



## Fitting variations.

We offer an extensive range of fittings that allow easy and fast assembly. Regardless of your product design – we can offer you a suitable solution. All variations of fittings and products are listed on the following pages.



Bolt hole fitting



Plate fitting



Stem fitting




Threaded pin



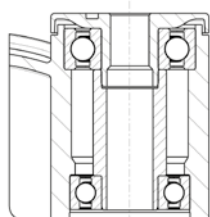
Expander fitting

Series: LKD-PATH

**Synthetic twin castors Blickle MOVE  
colour grey white,  
wheel with thermoplastic rubber-tread**

 125 - 150 kg

 RoHS



reddot award 2014  
winner



Focus Open 2014  
Special Mention

**Brackets:** LKD series - Made of high-quality, impact resistant and reinforced nylon, with two double sealed precision ball bearings in the swivel head, with bolt hole fitting, grey white RAL 9002.

**Wheels:** PATH series - Tread: Made of high-quality thermoplastic polyurethane (TPU), 94° shore A hardness, grey, non-marking.

Wheel centre: Made of high-quality, impact resistant nylon, grey white RAL 9002.

Bearing type: Precision ball bearings.

Operating temperature: -20° C to +60° C.

At ambient temperatures above +30° C the load capacity is reduced.



Swivel castors	Swivel castors with 'stop-fix' brake	Wheel Ø [mm]	Wheel width [mm]	Load capacity [kg]	Bearing type	Total height [mm]	Plate-Ø [mm]	Bolt hole Ø [mm]	Offset [mm]
LKD-PATH 125K	LKD-PATH 125K-FI	125	80	125	Ball bearing	130	42	13	40
LKD-PATH 125K-11	LKD-PATH 125K-11-FI	125	80	125	Ball bearing	130	42	11	40
LKD-PATH 150K	LKD-PATH 150K-FI	150	80	150	Ball bearing	155	42	13	53
LKD-PATH 150K-11	LKD-PATH 150K-11-FI	150	80	150	Ball bearing	155	42	11	53

For corrosion-resistant synthetic twin castors refer to page 68

## Options



	Electrically conductive version R < 10 <sup>4</sup> Ω	With zinc-plated steel threaded pin M10 x 20 * M12 x 20	With stem fitting	With plate fitting **	With central braking system "central-stop"	With expander fitting *	With coloured identifier for "stop-fix" braked version	In special colour
Technical description page			71	71		70		
Product code suffix	-ELS	-GS10 / -GS12	-ZA51 / -ZA55 / -ZA58	-P25 / -P26	-CS11-28 / -CS11-32	refer to page 70		
Available for	all sizes	all sizes	all sizes	all sizes	all sizes	all sizes	all sizes	all sizes


\* Reduced load capacity

\*\* Total height + 8 mm

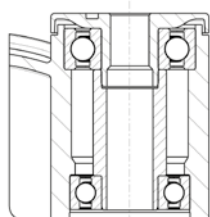


Series: LKDG-PATH

## Synthetic twin castors Blickle MOVE colour silver grey, wheel with thermoplastic rubber-tread

 125 - 150 kg

 RoHS



reddot award 2014  
winner



Focus Open 2014  
Special Mention

**Brackets:** LKD series - Made of high-quality, impact resistant and reinforced nylon, with two double sealed precision ball bearings in the swivel head, with bolt hole fitting, silver grey RAL 7001.

**Wheels:** PATH series - Tread: Made of high-quality thermoplastic polyurethane (TPU), 94° shore A hardness, grey, non-marking.

Wheel centre: Made of high-quality, impact resistant nylon, silver grey RAL 7001.

Bearing type: Precision ball bearings.

Operating temperature: -20° C to +60° C.

At ambient temperatures above +30° C the load capacity is reduced.



Swivel castors	Swivel castors with 'stop-fix' brake	Wheel Ø [mm]	Wheel width [mm]	Load capacity [kg]	Bearing type	Total height [mm]	Plate-Ø [mm]	Bolt hole Ø [mm]	Offset [mm]
LKDG-PATH 125K	LKDG-PATH 125K-FI	125	80	125	Ball bearing	130	42	13	40
LKDG-PATH 125K-11	LKDG-PATH 125K-11-FI	125	80	125	Ball bearing	130	42	11	40
LKDG-PATH 150K	LKDG-PATH 150K-FI	150	80	150	Ball bearing	155	42	13	53
LKDG-PATH 150K-11	LKDG-PATH 150K-11-FI	150	80	150	Ball bearing	155	42	11	53

For corrosion-resistant synthetic twin castors refer to page 69

### Options




	Electrically conductive version R < 10 <sup>4</sup> Ω	With zinc-plated steel threaded pin M10 x 20 * M12 x 20	With stem fitting	With plate fitting **	With central braking system "central-stop"	With expander fitting *	With coloured identifier for "stop-fix" braked version	In special colour
Technical description page			71	71		70		
Product code suffix	-ELS	-GS10 / -GS12	-ZA51 / -ZA55 / -ZA58	-P25 / -P26	-CS11-28 / -CS11-32	refer to page 70		
Available for	all sizes	all sizes	all sizes	upon request	upon request	upon request	upon request	upon request

\* Reduced load capacity

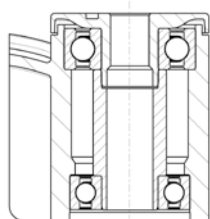
\*\* Total height + 8 mm

Series: LKDX-PATH

**Synthetic twin castors Blickle MOVE, corrosion-resistant, colour grey white, wheel with thermoplastic rubber-tread**

 125 - 150 kg

 RoHS



reddot award 2014  
winner



Focus Open 2014  
Special Mention

**Brackets:** LKDX series - Made of high-quality, impact resistant and reinforced nylon, with two double sealed corrosion-resistant precision ball bearings in the swivel head, with bolt hole fitting, grey white RAL 9002. All parts incl. axle material are corrosion-resistant.

**Wheels:** PATH series - Tread: Made of high-quality thermoplastic polyurethane (TPU), 94° shore A hardness, grey, non-marking.

Wheel centre: Made of high-quality, impact resistant nylon, grey white RAL 9002.

Bearing type: Stainless steel precision ball bearings.

Operating temperature: -20° C to +60° C.

At ambient temperatures above +30° C the load capacity is reduced.



Swivel castors	Swivel castors with 'stop-fix' brake	Wheel Ø [mm]	Wheel width [mm]	Load capacity [kg]	Bearing type	Total height [mm]	Plate-Ø [mm]	Bolt hole Ø [mm]	Offset [mm]
LKDX-PATH 125XK	LKDX-PATH 125XK-FI	125	80	125	Ball bearing	130	42	13	40
LKDX-PATH 125XK-11	LKDX-PATH 125XK-11-FI	125	80	125	Ball bearing	130	42	11	40
LKDX-PATH 150XK	LKDX-PATH 150XK-FI	150	80	150	Ball bearing	155	42	13	53
LKDX-PATH 150XK-11	LKDX-PATH 150XK-11-FI	150	80	150	Ball bearing	155	42	11	53

## Options




	Electrically conductive version R < 10 <sup>4</sup> Ω	With stainless steel threaded pin M10 x 20 * M12 x 20	With stainless steel stem fitting	With stainless steel plate fitting **	With synthetic expander fitting *	With coloured identifier for "stop-fix" braked version	In special colour
Technical description page			71	71	70		
Product code suffix	-ELS	-GSX10 / -GSX12	-ZAX51 / -ZAX55 / -ZAX58	-PX25 / -PX26	refer to page 70		
Available for	all sizes	all sizes	all sizes	upon request	upon request	upon request	upon request

\* Reduced load capacity

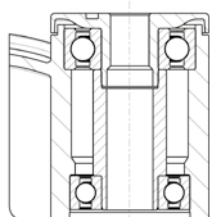
\*\* Total height + 8 mm

Series: LKDGX-PATH

**Synthetic twin castors Blickle MOVE, corrosion-resistant, colour silver grey, wheel with thermoplastic rubber-tread**

 125 - 150 kg

 RoHS



reddot award 2014  
winner



Focus Open 2014  
Special Mention

**Brackets:** LKDX series - Made of high-quality, impact resistant and reinforced nylon, with two double sealed corrosion-resistant precision ball bearings in the swivel head, with bolt hole fitting, silver grey RAL 7001. All parts incl. axle material are corrosion-resistant.

**Wheels:** PATH series - Tread: Made of high-quality thermoplastic polyurethane (TPU), 94° shore A hardness, grey, non-marking.

Wheel centre: Made of high-quality, impact resistant nylon, silver grey RAL 7001.

Bearing type: Stainless steel precision ball bearings.

Operating temperature: -20° C to +60° C.

At ambient temperatures above +30° C the load capacity is reduced.



Swivel castors	Swivel castors with 'stop-fix' brake	Wheel Ø [mm]	Wheel width [mm]	Load capacity [kg]	Bearing type	Total height [mm]	Plate-Ø [mm]	Bolt hole Ø [mm]	Offset [mm]
LKDGX-PATH 125XK	LKDGX-PATH 125XK-FI	125	80	125	Ball bearing	130	42	13	40
LKDGX-PATH 125XK-11	LKDGX-PATH 125XK-11-FI	125	80	125	Ball bearing	130	42	11	40
LKDGX-PATH 150XK	LKDGX-PATH 150XK-FI	150	80	150	Ball bearing	155	42	13	53
LKDGX-PATH 150XK-11	LKDGX-PATH 150XK-11-FI	150	80	150	Ball bearing	155	42	11	53

## Options



	Electrically conductive version R < 10 <sup>4</sup> Ω	With stainless steel threaded pin M10 x 20 * M12 x 20	With stainless steel stem fitting	With stainless steel plate fitting **	With synthetic expander fitting *	With coloured identifier for "stop-fix" braked version	In special colour
Technical description page			71	71	70		
Product code suffix	-ELS	-GSX10 / -GSX12	-ZAX51 / -ZAX55 / -ZAX58	-PX25 / -PX26	refer to page 70		
Available for	all sizes	all sizes	all sizes	upon request	upon request	upon request	upon request

\* Reduced load capacity

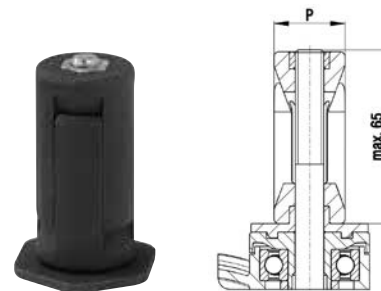
\*\* Total height + 8 mm

## Options for Blickle MOVE Synthetic castors



### Synthetic expander fitting for round tubes

Product code suffix	Product code suffix corrosion-resistant version	Internal tube dimension (P) [mm]	Available for all Blickle MOVE synthetic twin castors except the electrically conductive version. The castor and expander are secured against loosening by a positive location fit. The maximum fitting length is 65 mm. <b>The total height of the castor is increased by 5 mm.</b> Subject to technical changes. Available upon request.
-ER62	-EXR62	Ø 20 - 25	
-ER63	-EXR63	Ø 25 - 30	
-ER64	-EXR64	Ø 30 - 35	
-ER65	-EXR65	Ø 35 - 40	



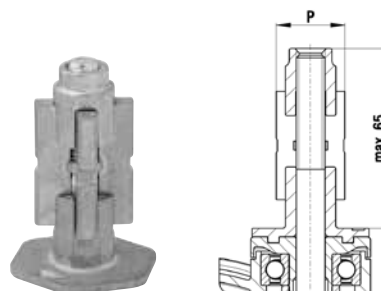
### Synthetic expander fitting for square tubes

Product code suffix	Product code suffix corrosion-resistant version	Internal tube dimension (P) [mm]	Available for all Blickle MOVE synthetic twin castors except the electrically conductive version. The castor and expander are secured against loosening by a positive location fit. The maximum fitting length is 65 mm. <b>The total height of the castor is increased by 5 mm.</b> Subject to technical changes. Available upon request.
-EV62	-EXV62	□ 18 - 21	
-EV63	-EXV63	□ 21 - 25	
-EV64	-EXV64	□ 25 - 29	
-EV65	-EXV65	□ 29 - 32	
-EV67	-EXV67	□ 32 - 38.5	



### Metal expander fitting for round and square tubes

Product code suffix	Internal tube dimension round tube (P) [mm]	Internal tube dimension square tube (P) [mm]	Available for all Blickle MOVE synthetic twin castors except the electrically conductive version. The castor and expander are secured against loosening by a positive location fit. The maximum fitting length is 65 mm. <b>The total height of the castor is increased by 5 mm.</b> Subject to technical changes. Available upon request.
-E61	Ø 17 - 19	□ 17 - 19	
-E62	Ø 20 - 25	□ 18 - 21	
-E63	Ø 25 - 30	□ 21 - 25	
-E64	Ø 30 - 35	□ 25 - 29	
-E65	Ø 35 - 40	□ 29 - 32	
-E67	Ø 39 - 45	□ 32 - 38.5	





## Options for Blickle MOVE Synthetic castors

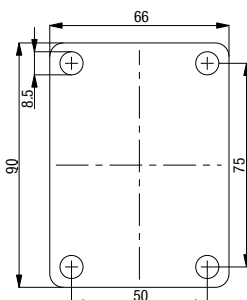
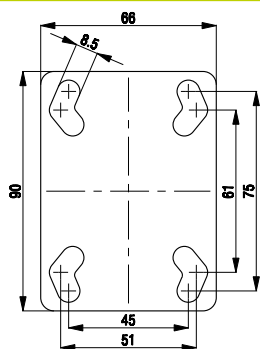


### Top plate fittings for Blickle MOVE Synthetic castors

Product code suffix	Product code suffix corrosion-resistant version	Plate size [mm]	Bolt hole spacing [mm]	Bolt hole-Ø [mm]	Zinc-plated, blue-passivated steel top plate fitting (Cr6-free), also available as corrosion-resistant plate fitting. Available upon request.
-P25	-PX25	90x66	75x45/61x51	8.5	
-P26	-PX26	90x66	75x50	8.5	

Plate No. 25

Plate No. 26



### Steel plug-in stem for Blickle MOVE Synthetic castors

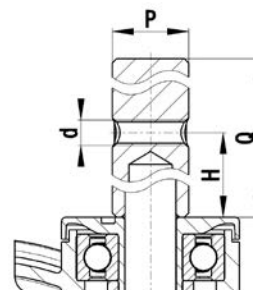
Product code suffix	Product code suffix corrosion-resistant version	Stem Ø P [mm]	Stem length Q [mm]	Ø retaining hole d [mm]	Position retaining hole H [mm]
-ZA51	-ZAX51	18	62	M6	30
-ZA55	-ZAX55	22	45	M8	20
-ZA58	-ZAX58	27.5	45	M8	20

The castors are fitted by means of a plug-in stem which can be inserted into a corresponding tube or hole and secured in place. The stem is firmly connected to the castor and can be secured against turning or loosening by means of a fixing bolt (retaining hole).

The load capacities indicated are only attained if the entire diameter of the top plate of the swivel castor is in contact with the appliance or equipment.

Stainless steel plug-in stems are available for stainless steel swivel castors.  
The above mentioned dimensions have to be considered when selecting plug-in stem fittings.

Subject to technical changes.



**The Blickle G15 general catalogue:**

**More than 30,000 wheels and castors on over 500 pages.**

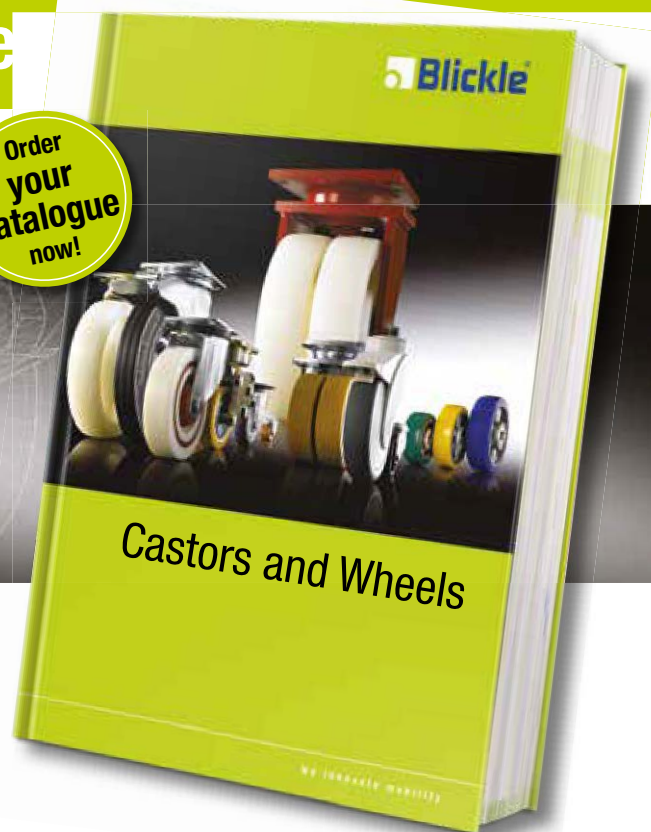
Experience Blickle's expertise and performance yourself: request the comprehensive G15 general catalogue by phone on +49 7428 932-0 or on the Internet at [www.blickle.com](http://www.blickle.com).

Our Blickle product finder is also available online.

# The Blickle G15 catalogue



Order  
your  
catalogue  
now!



Your local Blickle representative: